



LABORATORY GROWN DIAMOND REPORT

February 27, 2026
 IGI Report Number **LG779606402**
 Description **LABORATORY GROWN DIAMOND**
 Shape and Cutting Style **ROUND BRILLIANT**
 Measurements **4.78 - 4.80 X 2.87 MM**

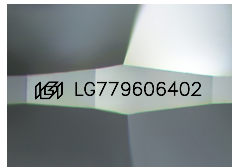
GRADING RESULTS

Carat Weight **0.40 CARAT**
 Color Grade **D**
 Clarity Grade **VVS 1**
 Cut Grade **IDEAL**

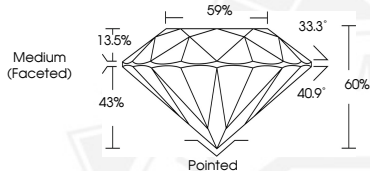
ADDITIONAL GRADING INFORMATION

Polish **EXCELLENT**
 Symmetry **EXCELLENT**
 Fluorescence **NONE**
 Inscription(s) **IGI LG779606402**

Comments: This Laboratory Grown Diamond was created by Chemical Vapor Deposition (CVD) growth process. Type IIa



Sample Image Used



February 27, 2026
 IGI Report Number **LG779606402**
 ROUND BRILLIANT
 LABORATORY GROWN DIAMOND
 4.78 - 4.80 X 2.87 MM
 0.40 CARAT
 D
 VVS 1
 IDEAL
 EXCELLENT
 EXCELLENT
 NONE
 IGI LG779606402
 Comments: This Laboratory Grown Diamond was created by Chemical Vapor Deposition (CVD) growth process. Type IIa



February 27, 2026
 IGI Report Number **LG779606402**
 ROUND BRILLIANT
 LABORATORY GROWN DIAMOND
 4.78 - 4.80 X 2.87 MM
 0.40 CARAT
 D
 VVS 1
 IDEAL
 EXCELLENT
 EXCELLENT
 NONE
 IGI LG779606402
 Comments: This Laboratory Grown Diamond was created by Chemical Vapor Deposition (CVD) growth process. Type IIa



THIS DOCUMENT WAS PRODUCED WITH THE FOLLOWING SECURITY MEASURES: SPECIAL DOCUMENT PAPER, INK SCREENS, WATERMARK, BACKGROUND DESIGNS, HOLOGRAM AND OTHER SECURITY FEATURES NOT LISTED AND DO EXCEED DOCUMENT SECURITY INDUSTRY GUIDELINES.