



**ELECTRONIC COPY**

LG779603933  
Report verification at [igi.org](http://igi.org)



March 10, 2026  
IGI Report Number **LG779603933**  
Description **LABORATORY GROWN DIAMOND**  
Shape and Cutting Style **CUT CORNERED  
RECTANGULAR MODIFIED  
BRILLIANT**  
Measurements **10.86 X 8.06 X 5.42 MM**  
**GRADING RESULTS**  
Carat Weight **4.11 CARATS**  
Color Grade **E**  
Clarity Grade **VVS 2**

March 10, 2026  
IGI Report Number **LG779603933**  
Description **LABORATORY GROWN DIAMOND**  
Shape and Cutting Style **CUT CORNERED RECTANGULAR  
MODIFIED BRILLIANT**  
Measurements **10.86 X 8.06 X 5.42 MM**

**GRADING RESULTS**

Carat Weight **4.11 CARATS**  
Color Grade **E**  
Clarity Grade **VVS 2**

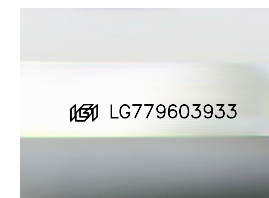
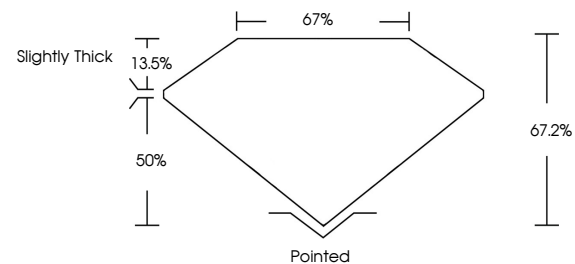
**ADDITIONAL GRADING INFORMATION**

Polish **EXCELLENT**  
Symmetry **EXCELLENT**  
Fluorescence **NONE**

Inscription(s) **IGI LG779603933**

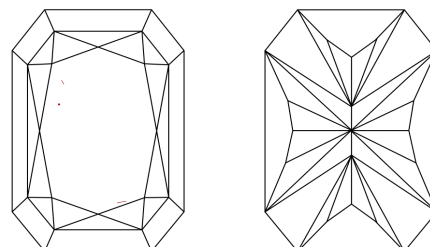
Comments: This Laboratory Grown Diamond was created by Chemical Vapor Deposition (CVD) growth process.  
Type IIa

**PROPORTIONS**



Sample Image Used

**CLARITY CHARACTERISTICS**



**KEY TO SYMBOLS**

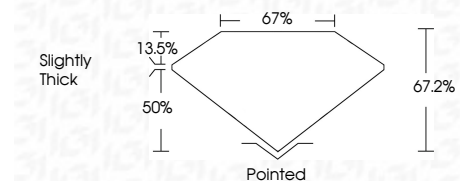
Red symbols indicate internal characteristics.  
Green symbols indicate external characteristics.

**COLOR**

D E F G H I J Faint Very Light Light

**CLARITY**

FL	IF	VVS <sup>1-2</sup>	VS <sup>1-2</sup>	SI <sup>1-2</sup>	I <sup>1-3</sup>
Flawless	Internally Flawless	Very Very Slightly Included	Very Slightly Included	Slightly Included	Included



**ADDITIONAL GRADING INFORMATION**

Polish **EXCELLENT**  
Symmetry **EXCELLENT**  
Fluorescence **NONE**  
Inscription(s) **IGI LG779603933**  
Comments: This Laboratory Grown Diamond was created by Chemical Vapor Deposition (CVD) growth process.  
Type IIa



**IGI**



March 10, 2026  
IGI Report No **LG779603933**  
**CUT CORNERED RECT. MODIFIED BRILLIANT**  
**10.86 X 8.06 X 5.42 MM**  
Carat Weight **4.11 CARATS**  
Color Grade **E**  
Clarity Grade **VVS 2**  
Depth **67.2%**  
Table **67%**  
Girdle **Slightly Thick**  
Culet **Pointed**  
Polish **EXCELLENT**  
Symmetry **EXCELLENT**  
Fluorescence **NONE**  
Inscription(s) **IGI LG779603933**

Comments: This Laboratory Grown Diamond was created by Chemical Vapor Deposition (CVD) growth process.  
Type IIa