



**ELECTRONIC COPY**

LG778699840  
Report verification at igi.org



February 26, 2026  
IGI Report Number **LG778699840**  
Description **LABORATORY GROWN DIAMOND**  
Shape and Cutting Style **SQUARE CUSHION MODIFIED BRILLIANT**  
Measurements **8.94 X 8.79 X 6.02 MM**  
**GRADING RESULTS**  
Carat Weight **3.55 CARATS**  
Color Grade **D**  
Clarity Grade **VS 1**

February 26, 2026  
IGI Report Number **LG778699840**  
Description **LABORATORY GROWN DIAMOND**  
Shape and Cutting Style **SQUARE CUSHION MODIFIED BRILLIANT**  
Measurements **8.94 X 8.79 X 6.02 MM**

**GRADING RESULTS**

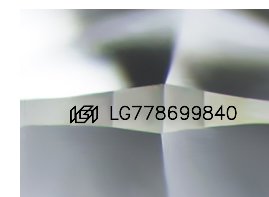
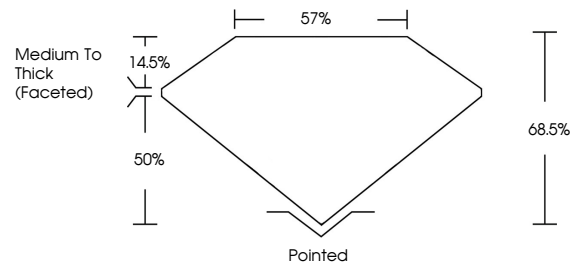
Carat Weight **3.55 CARATS**  
Color Grade **D**  
Clarity Grade **VS 1**

**ADDITIONAL GRADING INFORMATION**

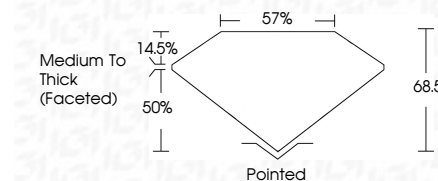
Polish **EXCELLENT**  
Symmetry **EXCELLENT**  
Fluorescence **NONE**  
Inscription(s) **IGI LG778699840**

Comments: This Laboratory Grown Diamond was created by Chemical Vapor Deposition (CVD) growth process.  
Type IIa

**PROPORTIONS**



Sample Image Used



**COLOR**

D E F G H I J Faint Very Light Light

**CLARITY**

FL	IF	VS <sup>1-2</sup>	VS <sup>1-2</sup>	SI <sup>1-2</sup>	I <sup>1-3</sup>
Flawless	Internally Flawless	Very Very Slightly Included	Very Slightly Included	Slightly Included	Included

**ADDITIONAL GRADING INFORMATION**

Polish **EXCELLENT**  
Symmetry **EXCELLENT**  
Fluorescence **NONE**  
Inscription(s) **IGI LG778699840**  
Comments: This Laboratory Grown Diamond was created by Chemical Vapor Deposition (CVD) growth process.  
Type IIa



February 26, 2026  
IGI Report No **LG778699840**  
**SQUARE CUSHION MODIFIED BRILLIANT**  
**8.94 X 8.79 X 6.02 MM**  
Carat Weight **3.55 CARATS**  
Color Grade **D**  
Clarity Grade **VS 1**  
Depth **68.5%**  
Table **57%**  
Girdle **Medium To Thick (Faceted)**  
Culet **Pointed**  
Polish **EXCELLENT**  
Symmetry **EXCELLENT**  
Fluorescence **NONE**  
Inscription(s) **IGI LG778699840**  
Comments: This Laboratory Grown Diamond was created by Chemical Vapor Deposition (CVD) growth process.  
Type IIa