



ELECTRONIC COPY

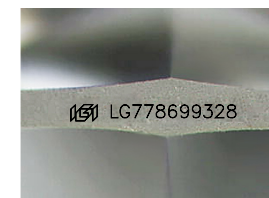
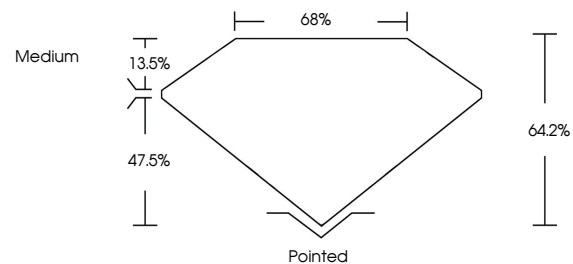
LG778699328
Report verification at igi.org



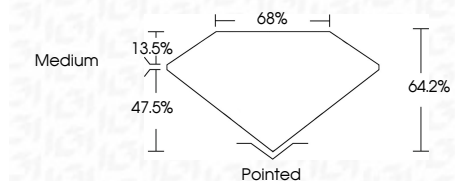
February 26, 2026
IGI Report Number **LG778699328**
Description **LABORATORY GROWN DIAMOND**
Shape and Cutting Style **HEXAGONAL MODIFIED BRILLIANT**
Measurements **13.17 X 7.20 X 4.62 MM**
GRADING RESULTS
Carat Weight **2.68 CARATS**
Color Grade **D**
Clarity Grade **VVS 2**

February 26, 2026
IGI Report Number **LG778699328**
Description **LABORATORY GROWN DIAMOND**
Shape and Cutting Style **HEXAGONAL MODIFIED BRILLIANT**
Measurements **13.17 X 7.20 X 4.62 MM**

PROPORTIONS



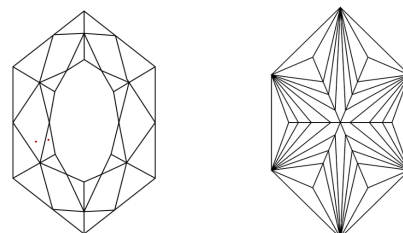
Sample Image Used



GRADING RESULTS

Carat Weight **2.68 CARATS**
Color Grade **D**
Clarity Grade **VVS 2**

CLARITY CHARACTERISTICS



KEY TO SYMBOLS

Red symbols indicate internal characteristics.
Green symbols indicate external characteristics.

COLOR

D E F G H I J Faint Very Light Light

CLARITY

| FL | IF | VVS ¹⁻² | VS ¹⁻² | SI ¹⁻² | I ¹⁻³ |
|----------|---------------------|-----------------------------|------------------------|-------------------|------------------|
| Flawless | Internally Flawless | Very Very Slightly Included | Very Slightly Included | Slightly Included | Included |

ADDITIONAL GRADING INFORMATION

Polish **EXCELLENT**
Symmetry **EXCELLENT**
Fluorescence **NONE**
Inscription(s) **IGI LG778699328**
Comments: This Laboratory Grown Diamond was created by Chemical Vapor Deposition (CVD) growth process. Type IIa

ADDITIONAL GRADING INFORMATION

Polish **EXCELLENT**
Symmetry **EXCELLENT**
Fluorescence **NONE**
Inscription(s) **IGI LG778699328**

Comments: This Laboratory Grown Diamond was created by Chemical Vapor Deposition (CVD) growth process. Type IIa



February 26, 2026
IGI Report No **LG778699328**
HEXAGONAL MODIFIED BRILLIANT
13.17 X 7.20 X 4.62 MM
2.68 CARATS
D
VVS 2
64.2%
68%
Medium
Pointed
EXCELLENT
EXCELLENT
NONE
IGI LG778699328

Comments: This Laboratory Grown Diamond was created by Chemical Vapor Deposition (CVD) growth process. Type IIa