



ELECTRONIC COPY

LABORATORY GROWN DIAMOND REPORT

February 26, 2026  
IGI Report Number LG778699317  
Description LABORATORY GROWN DIAMOND  
Shape and Cutting Style HEXAGONAL MODIFIED BRILLIANT  
Measurements 12.98 X 6.97 X 4.61 MM

GRADING RESULTS

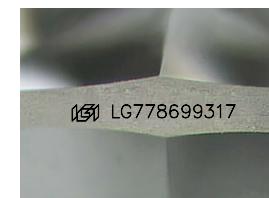
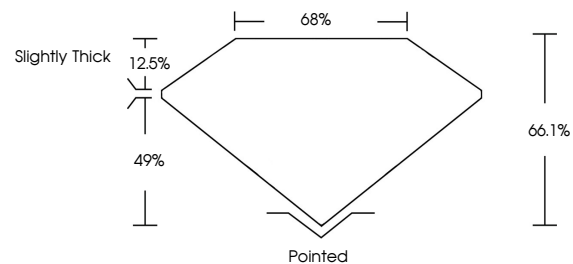
Carat Weight 2.57 CARATS  
Color Grade D  
Clarity Grade VVS 2

ADDITIONAL GRADING INFORMATION

Polish EXCELLENT  
Symmetry EXCELLENT  
Fluorescence NONE  
Inscription(s) LG778699317

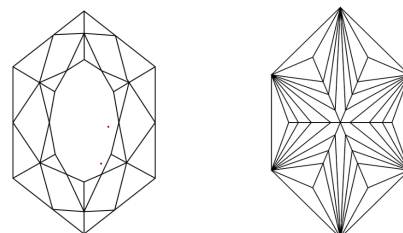
Comments: This Laboratory Grown Diamond was created by Chemical Vapor Deposition (CVD) growth process.  
Type IIa

PROPORTIONS



Sample Image Used

CLARITY CHARACTERISTICS



KEY TO SYMBOLS

Red symbols indicate internal characteristics.  
Green symbols indicate external characteristics.

COLOR

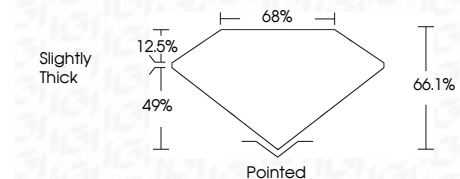
D E F G H I J Faint Very Light Light

CLARITY

FL IF VVS<sup>1-2</sup> VS<sup>1-2</sup> SI<sup>1-2</sup> I<sup>1-3</sup>  
Flawless Internally Flawless Very Very Slightly Included Very Slightly Included Slightly Included Included



February 26, 2026  
IGI Report Number LG778699317  
Description LABORATORY GROWN DIAMOND  
Shape and Cutting Style HEXAGONAL MODIFIED BRILLIANT  
Measurements 12.98 X 6.97 X 4.61 MM  
GRADING RESULTS  
Carat Weight 2.57 CARATS  
Color Grade D  
Clarity Grade VVS 2



ADDITIONAL GRADING INFORMATION

Polish EXCELLENT  
Symmetry EXCELLENT  
Fluorescence NONE  
Inscription(s) LG778699317  
Comments: This Laboratory Grown Diamond was created by Chemical Vapor Deposition (CVD) growth process.  
Type IIa



IGI



February 26, 2026  
IGI Report No LG778699317  
HEXAGONAL MODIFIED BRILLIANT  
2.57 CARATS D  
Carat Weight 2.57 CARATS  
Color Grade D  
Clarity Grade VVS 2  
Depth 66.1%  
Table 68%  
Girdle Slightly Thick  
Culet Pointed  
Polish EXCELLENT  
Symmetry EXCELLENT  
Fluorescence NONE  
Inscription(s) LG778699317  
Comments: This Laboratory Grown Diamond was created by Chemical Vapor Deposition (CVD) growth process.  
Type IIa