



ELECTRONIC COPY

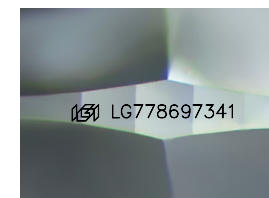
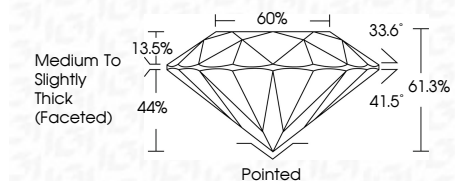
LG778697341 Report verification at igi.org



March 5, 2026 IGI Report Number LG778697341 Description LABORATORY GROWN DIAMOND Shape and Cutting Style ROUND BRILLIANT Measurements 7.46 - 7.49 X 4.58 MM

GRADING RESULTS

Carat Weight 1.58 CARAT Color Grade D Clarity Grade VS 1 Cut Grade IDEAL



Sample Image Used

ADDITIONAL GRADING INFORMATION

Polish EXCELLENT Symmetry EXCELLENT Fluorescence NONE Inscription(s) IGI LG778697341 Comments: This Laboratory Grown Diamond was created by Chemical Vapor Deposition (CVD) growth process. Type IIa



March 5, 2026 IGI Report No LG778697341 ROUND BRILLIANT 1.58 CARAT D 7.46 - 7.49 X 4.58 MM VS 1 IDEAL 61.3% 60% Medium To Slightly Thick (Faceted) Pointed EXCELLENT EXCELLENT NONE IGI LG778697341 Comments: This Laboratory Grown Diamond was created by Chemical Vapor Deposition (CVD) growth process. Type IIa

March 5, 2026 IGI Report Number LG778697341 Description LABORATORY GROWN DIAMOND Shape and Cutting Style ROUND BRILLIANT Measurements 7.46 - 7.49 X 4.58 MM

GRADING RESULTS

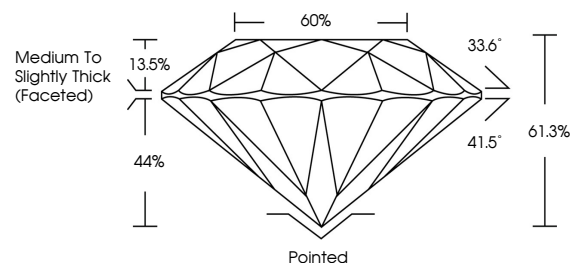
Carat Weight 1.58 CARAT Color Grade D Clarity Grade VS 1 Cut Grade IDEAL

ADDITIONAL GRADING INFORMATION

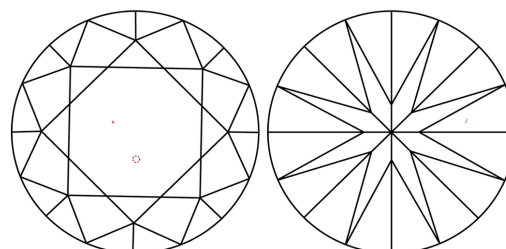
Polish EXCELLENT Symmetry EXCELLENT Fluorescence NONE Inscription(s) IGI LG778697341

Comments: This Laboratory Grown Diamond was created by Chemical Vapor Deposition (CVD) growth process. Type IIa

PROPORTIONS



CLARITY CHARACTERISTICS



KEY TO SYMBOLS

Red symbols indicate internal characteristics. Green symbols indicate external characteristics.

COLOR

D E F G H I J Faint Very Light Light

CLARITY

FL IF VS 1-2 VS 2-3 SI 1-2 I 1-3 Flawless Internally Flawless Very Very Slightly Included Very Slightly Included Slightly Included Included

