



ELECTRONIC COPY

LG778697309
Report verification at igi.org



March 9, 2026

IGI Report Number **LG778697309**

Description **LABORATORY GROWN DIAMOND**

Shape and Cutting Style **OVAL BRILLIANT**

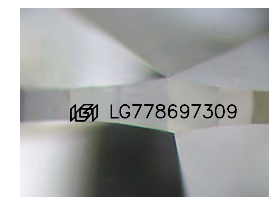
Measurements **9.53 X 6.55 X 3.95 MM**

GRADING RESULTS

Carat Weight **1.54 CARAT**

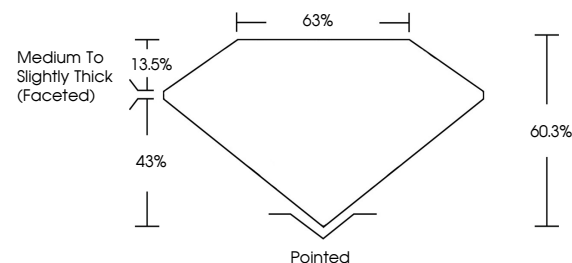
Color Grade **D**

Clarity Grade **VVS 2**

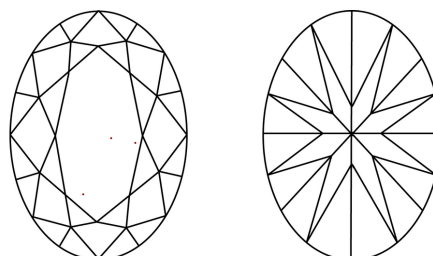


Sample Image Used

PROPORTIONS



CLARITY CHARACTERISTICS



KEY TO SYMBOLS

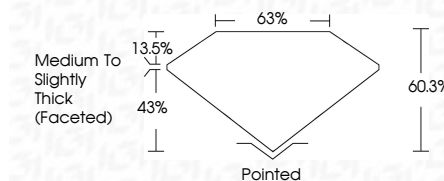
Red symbols indicate internal characteristics.
Green symbols indicate external characteristics.

COLOR

D E F G H I J Faint Very Light Light

CLARITY

FL	IF	VS ¹⁻²	VS ¹⁻²	SI ¹⁻²	I ¹⁻³
Flawless	Internally Flawless	Very Very Slightly Included	Very Slightly Included	Slightly Included	Included



ADDITIONAL GRADING INFORMATION

Polish **EXCELLENT**

Symmetry **EXCELLENT**

Fluorescence **NONE**

Inscription(s) **IGI LG778697309**

Comments: This Laboratory Grown Diamond was created by Chemical Vapor Deposition (CVD) growth process. Type IIa



IGI



March 9, 2026	IGI Report No LG778697309	1.54 CARAT	D
OVAL BRILLIANT	9.53 X 6.55 X 3.95 MM	Color Grade	VVS 2
Carat Weight	Color Grade	Depth	60.3%
Clarity Grade	Table	Girdle	65%
Measurements	Medium to Slightly Thick (Faceted)	Culet	Pointed
Polish	EXCELLENT	Symmetry	EXCELLENT
Symmetry	EXCELLENT	Fluorescence	NONE
Fluorescence	NONE	Inscription(s)	IGI LG778697309
Inscription(s)	IGI LG778697309		

Comments: This Laboratory Grown Diamond was created by Chemical Vapor Deposition (CVD) growth process. Type IIa