



ELECTRONIC COPY

LG778693943
Report verification at igi.org



March 20, 2026
IGI Report Number **LG778693943**
Description **LABORATORY GROWN DIAMOND**
Shape and Cutting Style **CUSHION MODIFIED BRILLIANT**
Measurements **9.15 X 6.38 X 4.14 MM**
GRADING RESULTS
Carat Weight **2.00 CARATS**
Color Grade **FANCY VIVID BLUE**
Clarity Grade **SI 1**

LABORATORY GROWN DIAMOND REPORT

March 20, 2026
IGI Report Number **LG778693943**
Description **LABORATORY GROWN DIAMOND**
Shape and Cutting Style **CUSHION MODIFIED BRILLIANT**
Measurements **9.15 X 6.38 X 4.14 MM**

GRADING RESULTS

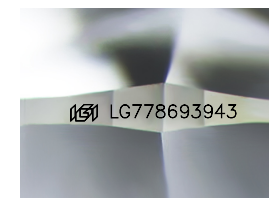
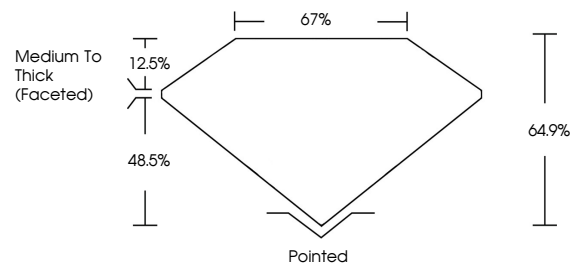
Carat Weight **2.00 CARATS**
Color Grade **FANCY VIVID BLUE**
Clarity Grade **SI 1**

ADDITIONAL GRADING INFORMATION

Polish **VERY GOOD**
Symmetry **VERY GOOD**
Fluorescence **NONE**
Inscription(s) **LG778693943**

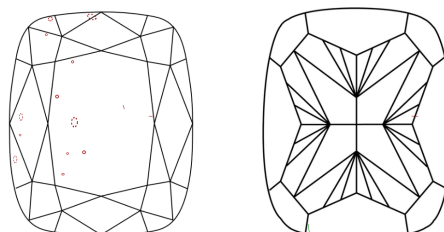
Comments: This Laboratory Grown Diamond was created by Chemical Vapor Deposition (CVD) growth process.
Indications of post-growth treatment.

PROPORTIONS



Sample Image Used

CLARITY CHARACTERISTICS



KEY TO SYMBOLS

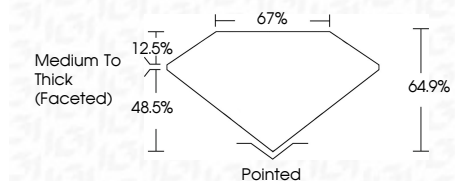
Red symbols indicate internal characteristics.
Green symbols indicate external characteristics.

COLOR

D E F G H I J Faint Very Light Light

CLARITY

FL	IF	VS ¹⁻²	VS ¹⁻²	SI ¹⁻²	I ¹⁻³
Flawless	Internally Flawless	Very Very Slightly Included	Very Slightly Included	Slightly Included	Included



ADDITIONAL GRADING INFORMATION

Polish **VERY GOOD**
Symmetry **VERY GOOD**
Fluorescence **NONE**
Inscription(s) **LG778693943**
Comments: This Laboratory Grown Diamond was created by Chemical Vapor Deposition (CVD) growth process.
Indications of post-growth treatment.



March 20, 2026
IGI Report No **LG778693943**
CUSHION MODIFIED BRILLIANT
9.15 X 6.38 X 4.14 MM
Carat Weight **2.00 CARATS**
Color Grade **FANCY VIVID BLUE**
Clarity Grade **SI 1**
Depth **48.5%**
Table **67%**
Girdle **Medium To Thick (Faceted)**
Culet **Pointed**
Polish **VERY GOOD**
Symmetry **VERY GOOD**
Fluorescence **NONE**
Inscription(s) **LG778693943**
Comments: This Laboratory Grown Diamond was created by Chemical Vapor Deposition (CVD) growth process.
Indications of post-growth treatment.