



**INTERNATIONAL  
GEMOLOGICAL  
INSTITUTE**

**LABORATORY GROWN DIAMOND REPORT**

February 27, 2026  
 IGI Report Number **LG778691332**  
 Description **LABORATORY GROWN DIAMOND**  
 Shape and Cutting Style **ROUND BRILLIANT**  
 Measurements **5.98 - 6.06 X 3.67 MM**

**GRADING RESULTS**

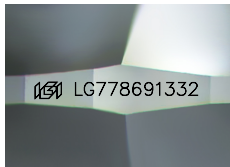
Carat Weight **0.81 CARAT**  
 Color Grade **D**  
 Clarity Grade **INTERNALLY FLAWLESS**  
 Cut Grade **IDEAL**

**ADDITIONAL GRADING INFORMATION**

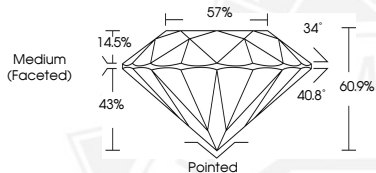
Polish **EXCELLENT**  
 Symmetry **EXCELLENT**  
 Fluorescence **NONE**  
 Inscription(s) **IGI LG778691332**

Comments: HEARTS & ARROWS  
 As Grown - No indication of post-growth treatment.  
 This Laboratory Grown Diamond was created by High Pressure High  
 Temperature (HPHT) growth process.  
 Type II

**ELECTRONIC COPY**



Sample Image Used



**HEARTS & ARROWS**



February 27, 2026  
 IGI Report Number **LG778691332**  
**ROUND BRILLIANT**  
**LABORATORY GROWN DIAMOND**  
**5.98 - 6.06 X 3.67 MM**  
 Carat Weight **0.81 CARAT**  
 Color Grade **D**  
 Clarity Grade **I.F.**  
 Cut Grade **IDEAL**  
 Polish **EXCELLENT**  
 Symmetry **EXCELLENT**  
 Fluorescence **NONE**  
 Inscription(s) **IGI LG778691332**

Comments: HEARTS & ARROWS As  
 Grown - No indication of post-  
 growth treatment. This Laboratory  
 Grown Diamond was created by  
 High Pressure High Temperature  
 (HPHT) growth process. Type II



February 27, 2026  
 IGI Report Number **LG778691332**  
**ROUND BRILLIANT**  
**LABORATORY GROWN DIAMOND**  
**5.98 - 6.06 X 3.67 MM**  
 Carat Weight **0.81 CARAT**  
 Color Grade **D**  
 Clarity Grade **I.F.**  
 Cut Grade **IDEAL**  
 Polish **EXCELLENT**  
 Symmetry **EXCELLENT**  
 Fluorescence **NONE**  
 Inscription(s) **IGI LG778691332**

Comments: HEARTS & ARROWS As  
 Grown - No indication of post-  
 growth treatment. This Laboratory  
 Grown Diamond was created by  
 High Pressure High Temperature  
 (HPHT) growth process. Type II



THIS DOCUMENT WAS PRODUCED WITH THE FOLLOWING SECURITY MEASURES: SPECIAL DOCUMENT PAPER, INK SCREENS, WATERMARK, BACKGROUND DESIGNS, HOLOGRAM AND OTHER SECURITY FEATURES NOT LISTED AND DO EXCEED DOCUMENT SECURITY INDUSTRY GUIDELINES.

For terms & conditions and to verify this report, please visit [www.igi.org](http://www.igi.org)