



LABORATORY GROWN DIAMOND REPORT

February 27, 2026
 IGI Report Number **LG778691194**
 Description **LABORATORY GROWN DIAMOND**
 Shape and Cutting Style **OVAL BRILLIANT**
 Measurements **7.88 X 5.73 X 3.45 MM**

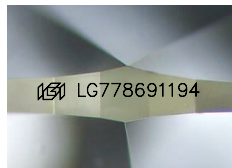
GRADING RESULTS

Carat Weight **0.97 CARAT**
 Color Grade **E**
 Clarity Grade **SI 1**

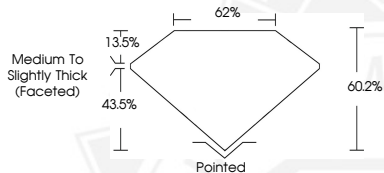
ADDITIONAL GRADING INFORMATION

Polish **EXCELLENT**
 Symmetry **EXCELLENT**
 Fluorescence **NONE**
 Inscription(s) **IGI LG778691194**

Comments: This Laboratory Grown Diamond was created by Chemical Vapor Deposition (CVD) growth process. Type IIa



Sample Image Used



February 27, 2026
 IGI Report Number **LG778691194**
OVAL BRILLIANT
LABORATORY GROWN DIAMOND
7.88 X 5.73 X 3.45 MM
 Carat Weight **0.97 CARAT**
 Color Grade **E**
 Clarity Grade **SI 1**
 Polish **EXCELLENT**
 Symmetry **EXCELLENT**
 Fluorescence **NONE**
 Inscription(s) **IGI LG778691194**

Comments: This Laboratory Grown Diamond was created by Chemical Vapor Deposition (CVD) growth process. Type IIa



February 27, 2026
 IGI Report Number **LG778691194**
OVAL BRILLIANT
LABORATORY GROWN DIAMOND
7.88 X 5.73 X 3.45 MM
 Carat Weight **0.97 CARAT**
 Color Grade **E**
 Clarity Grade **SI 1**
 Polish **EXCELLENT**
 Symmetry **EXCELLENT**
 Fluorescence **NONE**
 Inscription(s) **IGI LG778691194**

Comments: This Laboratory Grown Diamond was created by Chemical Vapor Deposition (CVD) growth process. Type IIa



THIS DOCUMENT WAS PRODUCED WITH THE FOLLOWING SECURITY MEASURES: SPECIAL DOCUMENT PAPER, INK SCREENS, WATERMARK, BACKGROUND DESIGNS, HOLOGRAM AND OTHER SECURITY FEATURES NOT LISTED AND DO EXCEED DOCUMENT SECURITY INDUSTRY GUIDELINES.