



**ELECTRONIC COPY**

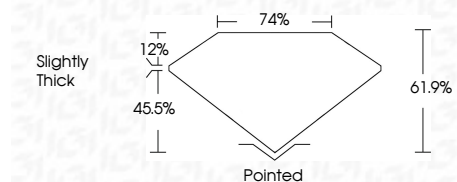
LG778689542  
Report verification at igi.org



February 27, 2026  
IGI Report Number **LG778689542**  
Description **LABORATORY GROWN DIAMOND**  
Shape and Cutting Style **MODIFIED LOZENGE STEP CUT**  
Measurements **13.23 X 9.06 X 5.61 MM**

**GRADING RESULTS**

Carat Weight **5.06 CARATS**  
Color Grade **D**  
Clarity Grade **VVS 2**



**ADDITIONAL GRADING INFORMATION**

Polish **EXCELLENT**  
Symmetry **EXCELLENT**  
Fluorescence **NONE**  
Inscription(s) **IGI LG778689542**  
Comments: This Laboratory Grown Diamond was created by Chemical Vapor Deposition (CVD) growth process. Type IIa



February 27, 2026  
IGI Report No LG778689542  
MODIFIED LOZENGE STEP CUT  
13.23 X 9.06 X 5.61 MM  
5.06 CARATS  
D  
5.06 CARATS  
D  
VVS 2  
61.9%  
74%  
Slightly Thick  
Pointed  
EXCELLENT  
EXCELLENT  
NONE  
IGI LG778689542  
Comments: This Laboratory Grown Diamond was created by Chemical Vapor Deposition (CVD) growth process. Type IIa

February 27, 2026  
IGI Report Number **LG778689542**  
Description **LABORATORY GROWN DIAMOND**  
Shape and Cutting Style **MODIFIED LOZENGE STEP CUT**  
Measurements **13.23 X 9.06 X 5.61 MM**

**GRADING RESULTS**

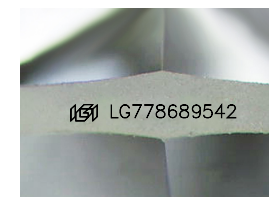
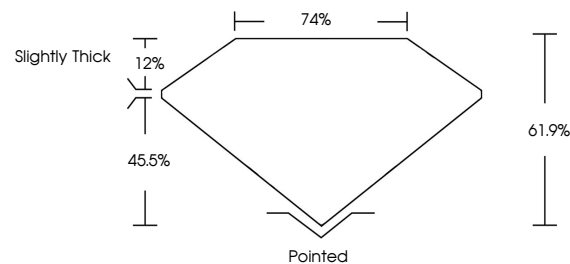
Carat Weight **5.06 CARATS**  
Color Grade **D**  
Clarity Grade **VVS 2**

**ADDITIONAL GRADING INFORMATION**

Polish **EXCELLENT**  
Symmetry **EXCELLENT**  
Fluorescence **NONE**  
Inscription(s) **IGI LG778689542**

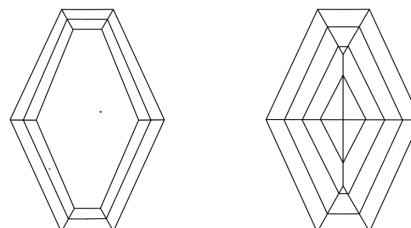
Comments: This Laboratory Grown Diamond was created by Chemical Vapor Deposition (CVD) growth process. Type IIa

**PROPORTIONS**



Sample Image Used

**CLARITY CHARACTERISTICS**



**KEY TO SYMBOLS**

Red symbols indicate internal characteristics.  
Green symbols indicate external characteristics.

**COLOR**

D E F G H I J Faint Very Light Light

**CLARITY**

FL	IF	VVS <sup>1-2</sup>	VS <sup>1-2</sup>	SI <sup>1-2</sup>	I <sup>1-3</sup>
Flawless	Internally Flawless	Very Very Slightly Included	Very Slightly Included	Slightly Included	Included

