



ELECTRONIC COPY

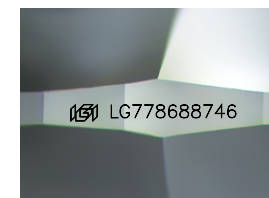
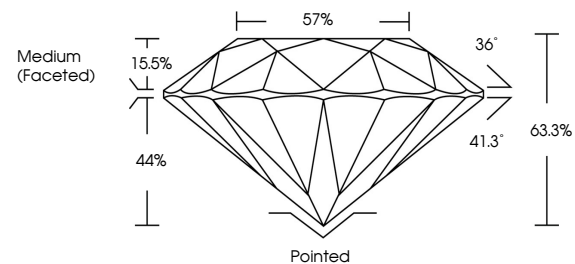
LG778688746
Report verification at igi.org



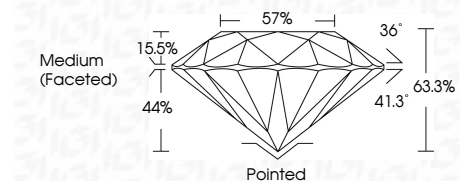
March 5, 2026
IGI Report Number **LG778688746**
Description **LABORATORY GROWN DIAMOND**
Shape and Cutting Style **ROUND BRILLIANT**
Measurements **7.95 - 7.98 X 5.04 MM**
GRADING RESULTS
Carat Weight **1.97 CARAT**
Color Grade **E**
Clarity Grade **VS 1**
Cut Grade **EXCELLENT**

March 5, 2026
IGI Report Number **LG778688746**
Description **LABORATORY GROWN DIAMOND**
Shape and Cutting Style **ROUND BRILLIANT**
Measurements **7.95 - 7.98 X 5.04 MM**

PROPORTIONS



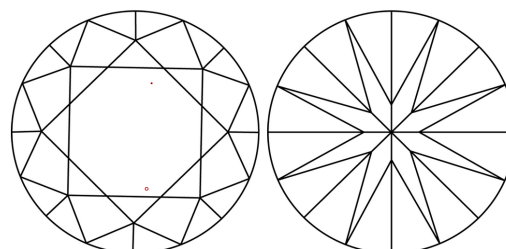
Sample Image Used



GRADING RESULTS

Carat Weight **1.97 CARAT**
Color Grade **E**
Clarity Grade **VS 1**
Cut Grade **EXCELLENT**

CLARITY CHARACTERISTICS



KEY TO SYMBOLS

Red symbols indicate internal characteristics.
Green symbols indicate external characteristics.

ADDITIONAL GRADING INFORMATION

Polish **EXCELLENT**
Symmetry **EXCELLENT**
Fluorescence **NONE**
Inscription(s) **IGI LG778688746**

COLOR

D E F G H I J Faint Very Light Light

CLARITY

FL	IF	VS ¹⁻²	VS ¹⁻²	SI ¹⁻²	I ¹⁻³
Flawless	Internally Flawless	Very Very Slightly Included	Very Slightly Included	Slightly Included	Included

ADDITIONAL GRADING INFORMATION

Polish **EXCELLENT**
Symmetry **EXCELLENT**
Fluorescence **NONE**
Inscription(s) **IGI LG778688746**
Comments: This Laboratory Grown Diamond was created by Chemical Vapor Deposition (CVD) growth process. Type IIa

Comments: This Laboratory Grown Diamond was created by Chemical Vapor Deposition (CVD) growth process. Type IIa



March 5, 2026
IGI Report No LG778688746
ROUND BRILLIANT
7.95 - 7.98 X 5.04 MM
1.97 CARAT
E
VS 1
EXCELLENT
63.3%
57%
Medium (Faceted)
Pointed
EXCELLENT
EXCELLENT
NONE
IGI LG778688746
Comments: This Laboratory Grown Diamond was created by Chemical Vapor Deposition (CVD) growth process. Type IIa