



ELECTRONIC COPY

LG778688449 Report verification at igi.org



March 2, 2026 IGI Report Number LG778688449 Description LABORATORY GROWN DIAMOND

Shape and Cutting Style CUT CORNERED RECTANGULAR MODIFIED BRILLIANT

Measurements 10.70 X 6.99 X 4.42 MM

GRADING RESULTS

Carat Weight 3.07 CARATS Color Grade E Clarity Grade VS 1

March 2, 2026 IGI Report Number LG778688449 Description LABORATORY GROWN DIAMOND Shape and Cutting Style CUT CORNERED RECTANGULAR MODIFIED BRILLIANT Measurements 10.70 X 6.99 X 4.42 MM

GRADING RESULTS

Carat Weight 3.07 CARATS Color Grade E Clarity Grade VS 1

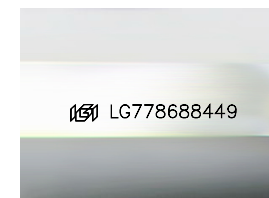
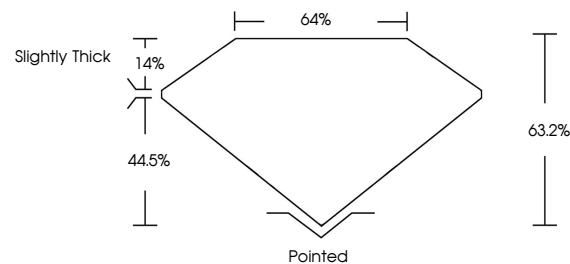
ADDITIONAL GRADING INFORMATION

Polish EXCELLENT Symmetry EXCELLENT Fluorescence NONE

Inscription(s) IGI LG778688449

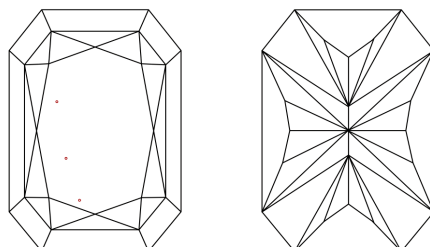
Comments: This Laboratory Grown Diamond was created by Chemical Vapor Deposition (CVD) growth process. Type IIa

PROPORTIONS



Sample Image Used

CLARITY CHARACTERISTICS



KEY TO SYMBOLS

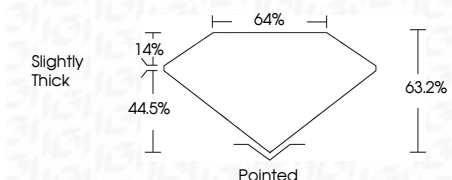
Red symbols indicate internal characteristics. Green symbols indicate external characteristics.

COLOR

D E F G H I J Faint Very Light Light

CLARITY

FL IF VS 1-2 VS 1-2 SI 1-2 I 1-3 Flawless Internally Flawless Very Very Slightly Included Very Slightly Included Slightly Included Included



ADDITIONAL GRADING INFORMATION

Polish EXCELLENT Symmetry EXCELLENT Fluorescence NONE Inscription(s) IGI LG778688449

Comments: This Laboratory Grown Diamond was created by Chemical Vapor Deposition (CVD) growth process. Type IIa



IGI



March 2, 2026 IGI Report No LG778688449 CUT CORNERED RECT. MODIFIED BRILLIANT 10.70 X 6.99 X 4.42 MM 3.07 CARATS E VS 1 63.2% 44.5% Slightly Thick Pointed EXCELLENT EXCELLENT NONE NONE IGI LG778688449 Comments: This Laboratory Grown Diamond was created by Chemical Vapor Deposition (CVD) growth process. Type IIa