



ELECTRONIC COPY

LG778687915
Report verification at igi.org



March 3, 2026

IGI Report Number LG778687915

Description LABORATORY GROWN DIAMOND

Shape and Cutting Style CUT CORNERED RECTANGULAR MODIFIED BRILLIANT

Measurements 11.35 X 7.78 X 5.27 MM

GRADING RESULTS

Carat Weight 3.94 CARATS

Color Grade E

Clarity Grade VS 1

March 3, 2026

IGI Report Number LG778687915

Description LABORATORY GROWN DIAMOND

Shape and Cutting Style CUT CORNERED RECTANGULAR MODIFIED BRILLIANT

Measurements 11.35 X 7.78 X 5.27 MM

GRADING RESULTS

Carat Weight 3.94 CARATS

Color Grade E

Clarity Grade VS 1

ADDITIONAL GRADING INFORMATION

Polish EXCELLENT

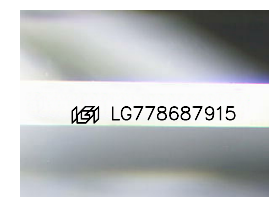
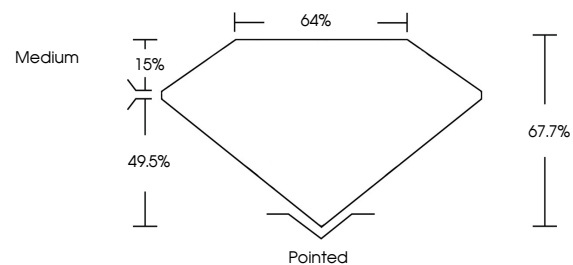
Symmetry EXCELLENT

Fluorescence NONE

Inscription(s) LG778687915

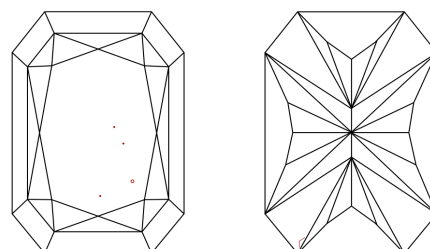
Comments: This Laboratory Grown Diamond was created by Chemical Vapor Deposition (CVD) growth process. Type IIa

PROPORTIONS



Sample Image Used

CLARITY CHARACTERISTICS



KEY TO SYMBOLS

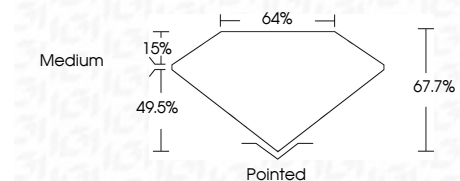
Red symbols indicate internal characteristics. Green symbols indicate external characteristics.

COLOR

D E F G H I J Faint Very Light Light

CLARITY

FL IF VS 1-2 VS 2-2 SI 1-2 I 1-3
Flawless Internally Flawless Very Very Slightly Included Very Slightly Included Slightly Included Included



ADDITIONAL GRADING INFORMATION

Polish EXCELLENT

Symmetry EXCELLENT

Fluorescence NONE

Inscription(s) LG778687915

Comments: This Laboratory Grown Diamond was created by Chemical Vapor Deposition (CVD) growth process. Type IIa



IGI



March 3, 2026
IGI Report No LG778687915
CUT CORNERED RECT. MODIFIED BRILLIANT
11.35 X 7.78 X 5.27 MM
3.94 CARATS
E
VS 1
67.7%
49.5%
Medium
Pointed
EXCELLENT
EXCELLENT
NONE
IGI LG778687915
Comments: This Laboratory Grown Diamond was created by Chemical Vapor Deposition (CVD) growth process. Type IIa