



March 11, 2026

**IGI Report Number LG778678560**  
**HEART MODIFIED BRILLIANT**  
**LABORATORY GROWN DIAMOND**  
**5.37 X 6.01 X 3.37 MM**

Carat Weight	<b>0.82 CARAT</b>
Color Grade	<b>FANCY PINK</b>
Clarity Grade	<b>VS 1</b>
Polish	<b>VERY GOOD</b>
Symmetry	<b>VERY GOOD</b>
Fluorescence	<b>STRONG</b>
Inscription(s)	<b>IGI LG778678560</b>

Comments: This Laboratory Grown Diamond was created by Chemical Vapor Deposition (CVD) growth process. Indications of post-growth treatment.

**LABORATORY GROWN DIAMOND REPORT**

March 11, 2026  
IGI Report Number **LG778678560**  
Description **LABORATORY GROWN DIAMOND**  
Shape and Cutting Style **HEART MODIFIED BRILLIANT**  
Measurements **5.37 X 6.01 X 3.37 MM**

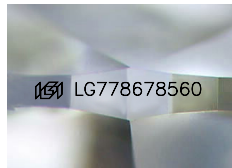
**GRADING RESULTS**

Carat Weight **0.82 CARAT**  
Color Grade **FANCY PINK**  
Clarity Grade **VS 1**

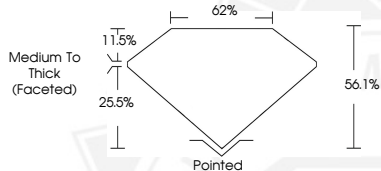
**ADDITIONAL GRADING INFORMATION**

Polish **VERY GOOD**  
Symmetry **VERY GOOD**  
Fluorescence **STRONG**  
Inscription(s) **IGI LG778678560**

Comments: This Laboratory Grown Diamond was created by Chemical Vapor Deposition (CVD) growth process. Indications of post-growth treatment.



Sample Image Used



March 11, 2026

**IGI Report Number LG778678560**  
**HEART MODIFIED BRILLIANT**  
**LABORATORY GROWN DIAMOND**  
**5.37 X 6.01 X 3.37 MM**

Carat Weight	<b>0.82 CARAT</b>
Color Grade	<b>FANCY PINK</b>
Clarity Grade	<b>VS 1</b>
Polish	<b>VERY GOOD</b>
Symmetry	<b>VERY GOOD</b>
Fluorescence	<b>STRONG</b>
Inscription(s)	<b>IGI LG778678560</b>

Comments: This Laboratory Grown Diamond was created by Chemical Vapor Deposition (CVD) growth process. Indications of post-growth treatment.

THIS DOCUMENT WAS PRODUCED WITH THE FOLLOWING SECURITY MEASURES: SPECIAL DOCUMENT PAPER, INK SCREENS, WATERMARK, BACKGROUND DESIGNS, HOLOGRAM AND OTHER SECURITY FEATURES NOT LISTED AND DO EXCEED DOCUMENT SECURITY INDUSTRY GUIDELINES.

For terms & conditions and to verify this report, please visit [www.igi.org](http://www.igi.org)