



ELECTRONIC COPY

LABORATORY GROWN DIAMOND REPORT

February 28, 2026
IGI Report Number LG778677437
Description LABORATORY GROWN DIAMOND
Shape and Cutting Style CUT CORNERED RECTANGULAR MIXED CUT
Measurements 9.76 X 6.95 X 4.74 MM

GRADING RESULTS

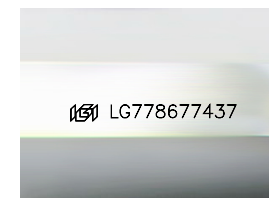
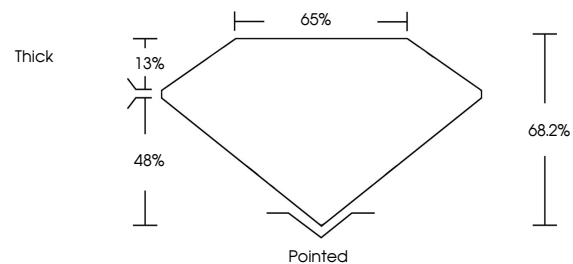
Carat Weight 3.09 CARATS
Color Grade FANCY INTENSE YELLOW
Clarity Grade VS 2

ADDITIONAL GRADING INFORMATION

Polish EXCELLENT
Symmetry EXCELLENT
Fluorescence NONE
Inscription(s) IGI LG778677437

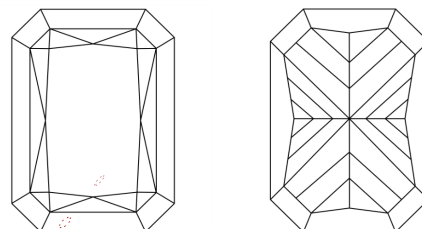
Comments: This Laboratory Grown Diamond was created by Chemical Vapor Deposition (CVD) growth process.

PROPORTIONS



Sample Image Used

CLARITY CHARACTERISTICS



KEY TO SYMBOLS

Red symbols indicate internal characteristics.
Green symbols indicate external characteristics.

COLOR

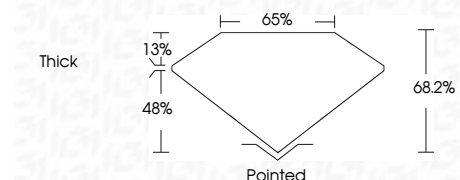
D E F G H I J Faint Very Light Light

CLARITY

FL IF VS¹⁻² VS¹⁻² SI¹⁻² I¹⁻³
Flawless Internally Flawless Very Very Slightly Included Very Slightly Included Slightly Included Included



February 28, 2026
IGI Report Number LG778677437
Description LABORATORY GROWN DIAMOND
Shape and Cutting Style CUT CORNERED RECTANGULAR MIXED CUT
Measurements 9.76 X 6.95 X 4.74 MM
GRADING RESULTS
Carat Weight 3.09 CARATS
Color Grade FANCY INTENSE YELLOW
Clarity Grade VS 2



ADDITIONAL GRADING INFORMATION

Polish EXCELLENT
Symmetry EXCELLENT
Fluorescence NONE
Inscription(s) IGI LG778677437
Comments: This Laboratory Grown Diamond was created by Chemical Vapor Deposition (CVD) growth process.



February 28, 2026
IGI Report No LG778677437
CUT CORNERED RECT. MIXED CUT
3.09 CARATS
FANCY INTENSE YELLOW
VS 2
68.2%
65%
Thick
Pointed
EXCELLENT
EXCELLENT
NONE
IGI LG778677437
Comments: This Laboratory Grown Diamond was created by Chemical Vapor Deposition (CVD) growth process.