



ELECTRONIC COPY

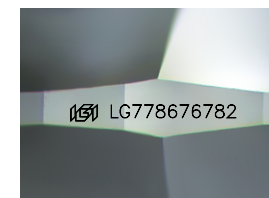
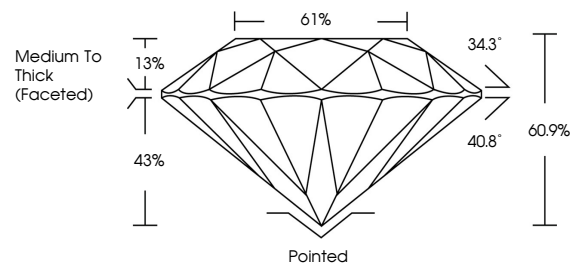
LG778676782
Report verification at igi.org



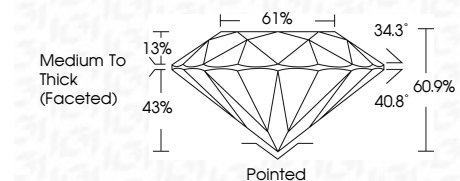
February 25, 2026
IGI Report Number LG778676782
Description LABORATORY GROWN DIAMOND
Shape and Cutting Style ROUND BRILLIANT
Measurements 7.26 - 7.32 X 4.44 MM
GRADING RESULTS
Carat Weight 1.50 CARAT
Color Grade D
Clarity Grade VVS 2
Cut Grade VERY GOOD

February 25, 2026
IGI Report Number LG778676782
Description LABORATORY GROWN DIAMOND
Shape and Cutting Style ROUND BRILLIANT
Measurements 7.26 - 7.32 X 4.44 MM

PROPORTIONS



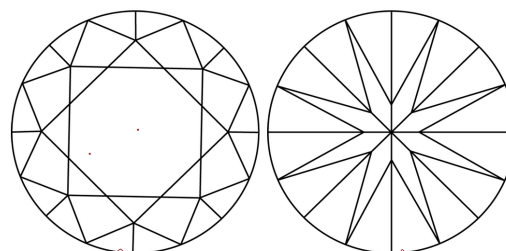
Sample Image Used



GRADING RESULTS

Carat Weight 1.50 CARAT
Color Grade D
Clarity Grade VVS 2
Cut Grade VERY GOOD

CLARITY CHARACTERISTICS



KEY TO SYMBOLS

Red symbols indicate internal characteristics.
Green symbols indicate external characteristics.

ADDITIONAL GRADING INFORMATION

Polish EXCELLENT
Symmetry EXCELLENT
Fluorescence NONE
Inscription(s) IGI LG778676782

ADDITIONAL GRADING INFORMATION

Polish EXCELLENT
Symmetry EXCELLENT
Fluorescence NONE
Inscription(s) IGI LG778676782
Comments: This Laboratory Grown Diamond was created by Chemical Vapor Deposition (CVD) growth process. Type IIa

COLOR

D E F G H I J Faint Very Light Light

CLARITY

FL IF VVS 1-2 VS 1-2 SI 1-2 I 1-3
Flawless Internally Flawless Very Very Slightly Included Very Slightly Included Slightly Included Included



IGI

February 25, 2026
IGI Report No LG778676782
ROUND BRILLIANT
1.50 CARAT
Color Grade D
Clarity Grade VVS 2
Depth 60.9%
Table 61%
Girdle Medium To Thick (Faceted)
Culet Pointed
Polish EXCELLENT
Symmetry EXCELLENT
Fluorescence NONE
Inscription(s) IGI LG778676782
Comments: This Laboratory Grown Diamond was created by Chemical Vapor Deposition (CVD) growth process. Type IIa