



ELECTRONIC COPY

LG778676016
Report verification at igi.org



April 9, 2026

IGI Report Number **LG778676016**

Description **LABORATORY GROWN DIAMOND**

Shape and Cutting Style **ROUND BRILLIANT**

Measurements **7.46 - 7.49 X 4.61 MM**

GRADING RESULTS

Carat Weight **1.60 CARAT**

Color Grade **E**

Clarity Grade **VVS 2**

Cut Grade **IDEAL**

April 9, 2026

IGI Report Number **LG778676016**

Description **LABORATORY GROWN DIAMOND**

Shape and Cutting Style **ROUND BRILLIANT**

Measurements **7.46 - 7.49 X 4.61 MM**

GRADING RESULTS

Carat Weight **1.60 CARAT**

Color Grade **E**

Clarity Grade **VVS 2**

Cut Grade **IDEAL**

ADDITIONAL GRADING INFORMATION

Polish **EXCELLENT**

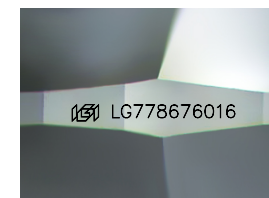
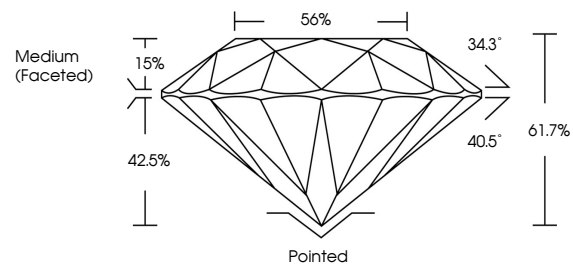
Symmetry **EXCELLENT**

Fluorescence **NONE**

Inscription(s) **IGI LG778676016**

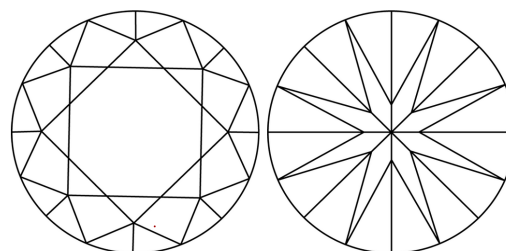
Comments: This Laboratory Grown Diamond was created by Chemical Vapor Deposition (CVD) growth process.
Type IIa

PROPORTIONS



Sample Image Used

CLARITY CHARACTERISTICS



KEY TO SYMBOLS

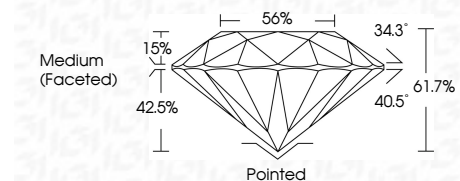
Red symbols indicate internal characteristics.
Green symbols indicate external characteristics.

COLOR

D E F G H I J Faint Very Light Light

CLARITY

FL	IF	VVS ¹⁻²	VS ¹⁻²	SI ¹⁻²	I ¹⁻³
Flawless	Internally Flawless	Very Very Slightly Included	Very Slightly Included	Slightly Included	Included



ADDITIONAL GRADING INFORMATION

Polish **EXCELLENT**

Symmetry **EXCELLENT**

Fluorescence **NONE**

Inscription(s) **IGI LG778676016**

Comments: This Laboratory Grown Diamond was created by Chemical Vapor Deposition (CVD) growth process.
Type IIa



IGI



April 9, 2026	IGI Report No LG778676016	1.60 CARAT	E	Pointed	EXCELLENT	EXCELLENT	NONE	IGI LG778676016
ROUND BRILLIANT	7.46 - 7.49 X 4.61 MM	Color Grade	VVS 2	Depth	IDEAL	61.7%	56%	Medium (Faceted)
		Clarity Grade	VVS 2	Cut Grade	IDEAL	61.7%	56%	Medium (Faceted)
		Table	15%					
		Grille						
		Polish	EXCELLENT	Symmetry	EXCELLENT	EXCELLENT	NONE	IGI LG778676016
		Fluorescence	NONE	Inscription(s)	IGI LG778676016			
		Comments: This Laboratory Grown Diamond was created by Chemical Vapor Deposition (CVD) growth process. Type IIa						