



**ELECTRONIC COPY**

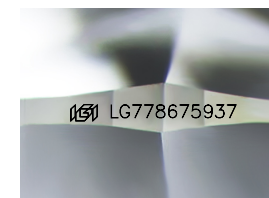
LG778675937  
Report verification at igi.org



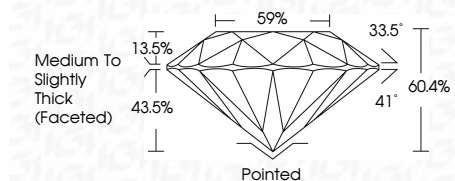
April 8, 2026  
IGI Report Number **LG778675937**  
Description **LABORATORY GROWN DIAMOND**  
Shape and Cutting Style **ROUND BRILLIANT**  
Measurements **8.75 - 8.91 X 5.33 MM**

**GRADING RESULTS**

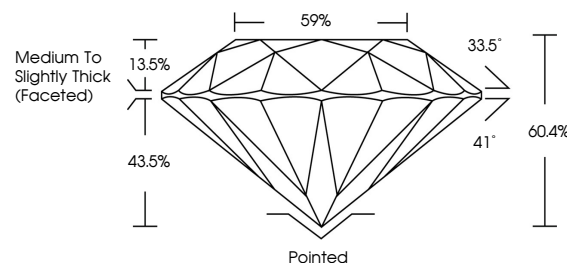
Carat Weight **2.55 CARATS**  
Color Grade **E**  
Clarity Grade **VVS 1**  
Cut Grade **IDEAL**



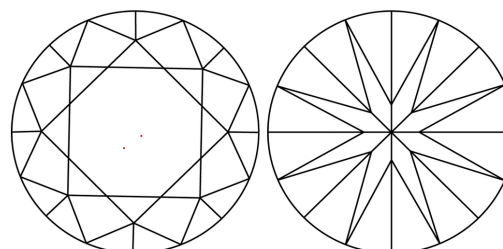
Sample Image Used



**PROPORTIONS**



**CLARITY CHARACTERISTICS**



**KEY TO SYMBOLS**

Red symbols indicate internal characteristics.  
Green symbols indicate external characteristics.

**COLOR**

D E F G H I J Faint Very Light Light

**CLARITY**

FL	IF	VVS <sup>1-2</sup>	VS <sup>1-2</sup>	SI <sup>1-2</sup>	I <sup>1-3</sup>
Flawless	Internally Flawless	Very Very Slightly Included	Very Slightly Included	Slightly Included	Included

**ADDITIONAL GRADING INFORMATION**

Polish **EXCELLENT**  
Symmetry **EXCELLENT**  
Fluorescence **NONE**  
Inscription(s) **(IGI) LG778675937**  
Comments: This Laboratory Grown Diamond was created by Chemical Vapor Deposition (CVD) growth process. Type IIa

April 8, 2026  
IGI Report Number **LG778675937**  
Description **LABORATORY GROWN DIAMOND**  
Shape and Cutting Style **ROUND BRILLIANT**  
Measurements **8.75 - 8.91 X 5.33 MM**

**GRADING RESULTS**

Carat Weight **2.55 CARATS**  
Color Grade **E**  
Clarity Grade **VVS 1**  
Cut Grade **IDEAL**

**ADDITIONAL GRADING INFORMATION**

Polish **EXCELLENT**  
Symmetry **EXCELLENT**  
Fluorescence **NONE**  
Inscription(s) **(IGI) LG778675937**

Comments: This Laboratory Grown Diamond was created by Chemical Vapor Deposition (CVD) growth process. Type IIa



April 8, 2026  
IGI Report No LG778675937  
**ROUND BRILLIANT**  
8.75 - 8.91 X 5.33 MM  
2.55 CARATS  
E  
VVS 1  
IDEAL  
60.4%  
59%  
Medium To Slightly Thick (Faceted)  
Pointed  
EXCELLENT  
EXCELLENT  
NONE  
NONE  
(IGI) LG778675937  
Comments: This Laboratory Grown Diamond was created by Chemical Vapor Deposition (CVD) growth process. Type IIa