



**ELECTRONIC COPY**

LG778674992  
Report verification at igi.org



April 6, 2026

IGI Report Number **LG778674992**

Description **LABORATORY GROWN DIAMOND**

Shape and Cutting Style **EMERALD CUT**

Measurements **8.40 X 5.87 X 4.03 MM**

**GRADING RESULTS**

Carat Weight **2.01 CARATS**

Color Grade **FANCY VIVID BLUE**

Clarity Grade **VS 2**

**LABORATORY GROWN DIAMOND REPORT**

April 6, 2026

IGI Report Number **LG778674992**

Description **LABORATORY GROWN DIAMOND**

Shape and Cutting Style **EMERALD CUT**

Measurements **8.40 X 5.87 X 4.03 MM**

**GRADING RESULTS**

Carat Weight **2.01 CARATS**

Color Grade **FANCY VIVID BLUE**

Clarity Grade **VS 2**

**ADDITIONAL GRADING INFORMATION**

Polish **EXCELLENT**

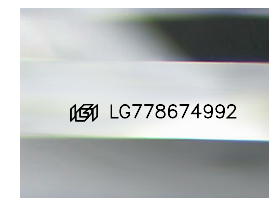
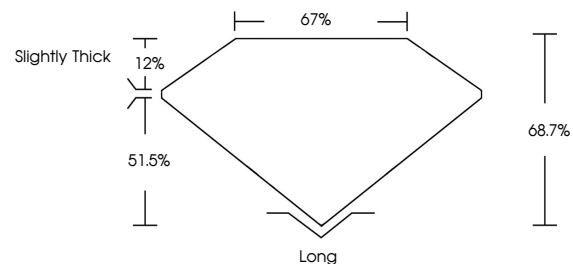
Symmetry **EXCELLENT**

Fluorescence **NONE**

Inscription(s) **IGI LG778674992**

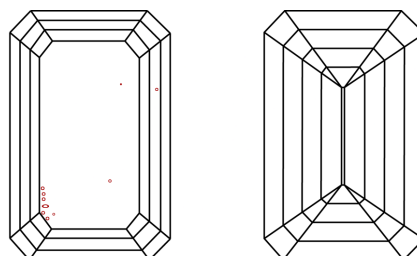
Comments: This Laboratory Grown Diamond was created by Chemical Vapor Deposition (CVD) growth process. Indications of post-growth treatment.

**PROPORTIONS**



Sample Image Used

**CLARITY CHARACTERISTICS**



**KEY TO SYMBOLS**

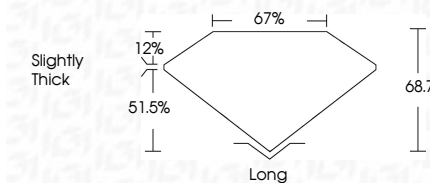
Red symbols indicate internal characteristics.  
Green symbols indicate external characteristics.

**COLOR**

D E F G H I J Faint Very Light Light

**CLARITY**

FL	IF	VS <sup>1-2</sup>	VS <sup>1-2</sup>	SI <sup>1-2</sup>	I <sup>1-3</sup>
Flawless	Internally Flawless	Very Very Slightly Included	Very Slightly Included	Slightly Included	Included



**ADDITIONAL GRADING INFORMATION**

Polish **EXCELLENT**

Symmetry **EXCELLENT**

Fluorescence **NONE**

Inscription(s) **IGI LG778674992**

Comments: This Laboratory Grown Diamond was created by Chemical Vapor Deposition (CVD) growth process. Indications of post-growth treatment.



**IGI**



April 6, 2026	2.01 CARATS
IGI Report No LG778674992	FANCY VIVID BLUE
EMERALD CUT	VS 2
8.40 X 5.87 X 4.03 MM	68.7%
Carat Weight	67%
Color Grade	Slightly Thick
Clarity Grade	Long
Depth	EXCELLENT
Table	EXCELLENT
Graile	NONE
Culet	IGI LG778674992
Polish	
Symmetry	
Fluorescence	
Inscription(s)	

Comments: This Laboratory Grown Diamond was created by Chemical Vapor Deposition (CVD) growth process. Indications of post-growth treatment.