



ELECTRONIC COPY

LG778672752
Report verification at igi.org



March 26, 2026

IGI Report Number **LG778672752**

Description **LABORATORY GROWN DIAMOND**

Shape and Cutting Style **CUT CORNERED
RECTANGULAR MODIFIED
BRILLIANT**

Measurements **8.14 X 5.87 X 3.80 MM**

GRADING RESULTS

Carat Weight **1.53 CARAT**

Color Grade **FANCY VIVID PINK**

Clarity Grade **VVS 2**

LABORATORY GROWN DIAMOND REPORT

March 26, 2026

IGI Report Number **LG778672752**

Description **LABORATORY GROWN DIAMOND**

Shape and Cutting Style **CUT CORNERED RECTANGULAR
MODIFIED BRILLIANT**

Measurements **8.14 X 5.87 X 3.80 MM**

GRADING RESULTS

Carat Weight **1.53 CARAT**

Color Grade **FANCY VIVID PINK**

Clarity Grade **VVS 2**

ADDITIONAL GRADING INFORMATION

Polish **EXCELLENT**

Symmetry **EXCELLENT**

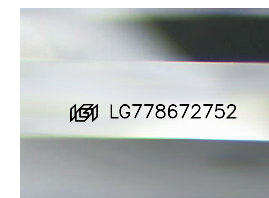
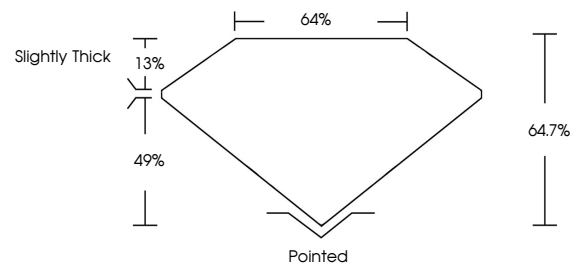
Fluorescence **SLIGHT**

Inscription(s) **IGI LG778672752**

Comments: This Laboratory Grown Diamond was created by Chemical Vapor Deposition (CVD) growth process.

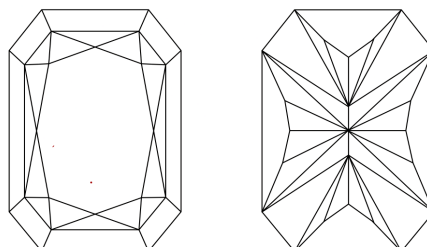
Indications of post-growth treatment.

PROPORTIONS



Sample Image Used

CLARITY CHARACTERISTICS



KEY TO SYMBOLS

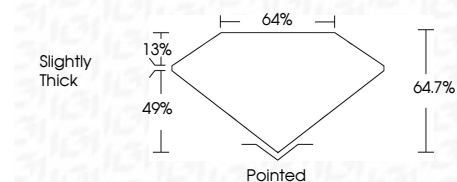
Red symbols indicate internal characteristics.
Green symbols indicate external characteristics.

COLOR

D E F G H I J Faint Very Light Light

CLARITY

FL	IF	VVS ¹⁻²	VS ¹⁻²	SI ¹⁻²	I ¹⁻³
Flawless	Internally Flawless	Very Very Slightly Included	Very Slightly Included	Slightly Included	Included



ADDITIONAL GRADING INFORMATION

Polish **EXCELLENT**

Symmetry **EXCELLENT**

Fluorescence **SLIGHT**

Inscription(s) **IGI LG778672752**

Comments: This Laboratory Grown Diamond was created by Chemical Vapor Deposition (CVD) growth process. Indications of post-growth treatment.



March 26, 2026
IGI Report No LG778672752
CUT CORNERED RECT. MODIFIED BRILLIANT
8.14 X 5.87 X 3.80 MM
1.53 CARAT
FANCY VIVID PINK
VVS 2
64.7%
49%
Slightly Thick
Pointed
EXCELLENT
EXCELLENT
SLIGHT
IGI LG778672752

Comments: This Laboratory Grown Diamond was created by Chemical Vapor Deposition (CVD) growth process. Indications of post-growth treatment.