



ELECTRONIC COPY

LG778672741
Report verification at igi.org



March 26, 2026

IGI Report Number **LG778672741**

Description **LABORATORY GROWN DIAMOND**

Shape and Cutting Style **CUT CORNERED
RECTANGULAR MODIFIED
BRILLIANT**

Measurements **10.12 X 6.81 X 4.00 MM**

GRADING RESULTS

Carat Weight **2.62 CARATS**

Color Grade **E**

Clarity Grade **VS 2**

LABORATORY GROWN DIAMOND REPORT

March 26, 2026

IGI Report Number **LG778672741**

Description **LABORATORY GROWN DIAMOND**

Shape and Cutting Style **CUT CORNERED RECTANGULAR
MODIFIED BRILLIANT**

Measurements **10.12 X 6.81 X 4.00 MM**

GRADING RESULTS

Carat Weight **2.62 CARATS**

Color Grade **E**

Clarity Grade **VS 2**

ADDITIONAL GRADING INFORMATION

Polish **EXCELLENT**

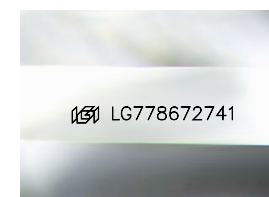
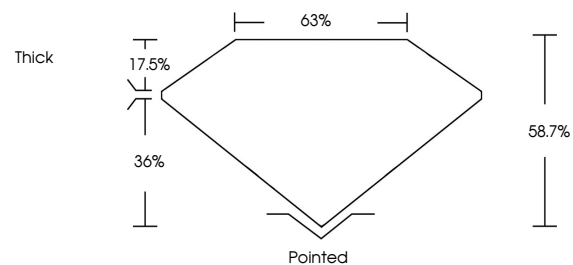
Symmetry **EXCELLENT**

Fluorescence **NONE**

Inscription(s) **IGI LG778672741**

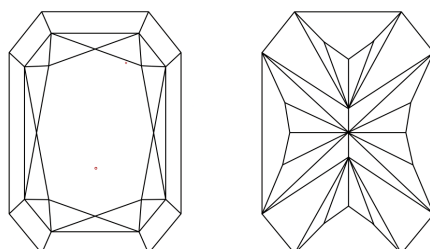
Comments: This Laboratory Grown Diamond was created by Chemical Vapor Deposition (CVD) growth process.
Type IIa

PROPORTIONS



Sample Image Used

CLARITY CHARACTERISTICS



KEY TO SYMBOLS

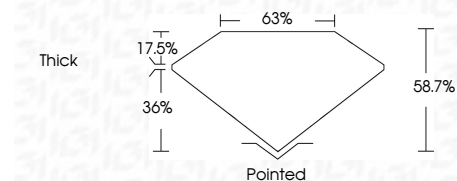
Red symbols indicate internal characteristics.
Green symbols indicate external characteristics.

COLOR

D E F G H I J Faint Very Light Light

CLARITY

FL	IF	VS ¹⁻²	VS ¹⁻²	SI ¹⁻²	I ¹⁻³
Flawless	Internally Flawless	Very Very Slightly Included	Very Slightly Included	Slightly Included	Included



ADDITIONAL GRADING INFORMATION

Polish **EXCELLENT**

Symmetry **EXCELLENT**

Fluorescence **NONE**

Inscription(s) **IGI LG778672741**

Comments: This Laboratory Grown Diamond was created by Chemical Vapor Deposition (CVD) growth process.
Type IIa



IGI



March 26, 2026
IGI Report No LG778672741
CUT CORNERED RECT. MODIFIED BRILLIANT
10.12 X 6.81 X 4.00 MM
2.62 CARATS
E
VS 2
58.7%
63%
Thick
Pointed
EXCELLENT
EXCELLENT
NONE
IGI LG778672741

Comments: This Laboratory Grown Diamond was created by Chemical Vapor Deposition (CVD) growth process.
Type IIa