



ELECTRONIC COPY

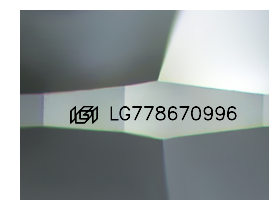
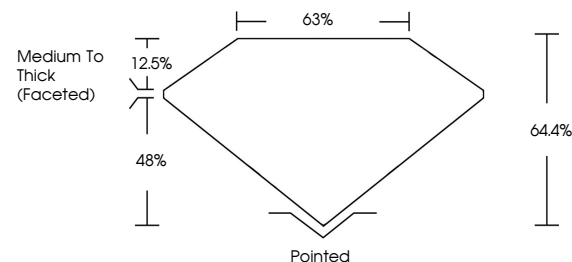
LG778670996 Report verification at igi.org



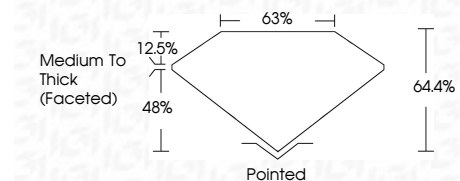
March 26, 2026 IGI Report Number LG778670996 Description LABORATORY GROWN DIAMOND Shape and Cutting Style CUSHION MODIFIED BRILLIANT Measurements 14.46 X 10.42 X 6.71 MM GRADING RESULTS Carat Weight 9.04 CARATS Color Grade FANCY VIVID PINK Clarity Grade VVS 2

March 26, 2026 IGI Report Number LG778670996 Description LABORATORY GROWN DIAMOND Shape and Cutting Style CUSHION MODIFIED BRILLIANT Measurements 14.46 X 10.42 X 6.71 MM

PROPORTIONS



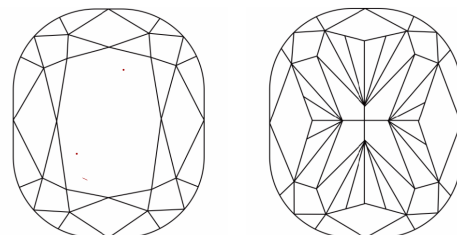
Sample Image Used



GRADING RESULTS

Carat Weight 9.04 CARATS Color Grade FANCY VIVID PINK Clarity Grade VVS 2

CLARITY CHARACTERISTICS



KEY TO SYMBOLS

Red symbols indicate internal characteristics. Green symbols indicate external characteristics.

COLOR

D E F G H I J Faint Very Light Light

CLARITY

FL IF VVS 1-2 VS 1-2 SI 1-2 I 1-3 Flawless Internally Flawless Very Very Slightly Included Very Slightly Included Slightly Included Included

ADDITIONAL GRADING INFORMATION

Polish EXCELLENT Symmetry EXCELLENT Fluorescence SLIGHT Inscription(s) IGI LG778670996 Comments: This Laboratory Grown Diamond was created by Chemical Vapor Deposition (CVD) growth process. Indications of post-growth treatment.

ADDITIONAL GRADING INFORMATION

Polish EXCELLENT Symmetry EXCELLENT Fluorescence SLIGHT Inscription(s) IGI LG778670996

Comments: This Laboratory Grown Diamond was created by Chemical Vapor Deposition (CVD) growth process. Indications of post-growth treatment.



March 26, 2026 IGI Report No LG778670996 CUSHION MODIFIED BRILLIANT 14.46 X 10.42 X 6.71 MM 9.04 CARATS FANCY VIVID PINK VVS 2 64.4% 63% Medium To Thick (Faceted) Pointed EXCELLENT EXCELLENT SLIGHT IGI LG778670996 Comments: This Laboratory Grown Diamond was created by Chemical Vapor Deposition (CVD) growth process. Indications of post-growth treatment.