



ELECTRONIC COPY

LG778670967 Report verification at igi.org



March 27, 2026 IGI Report Number LG778670967 Description LABORATORY GROWN DIAMOND Shape and Cutting Style CUSHION MODIFIED BRILLIANT Measurements 9.27 X 6.79 X 4.37 MM GRADING RESULTS Carat Weight 2.51 CARATS Color Grade FANCY VIVID PINK Clarity Grade VVS 2

March 27, 2026 IGI Report Number LG778670967 Description LABORATORY GROWN DIAMOND Shape and Cutting Style CUSHION MODIFIED BRILLIANT Measurements 9.27 X 6.79 X 4.37 MM

GRADING RESULTS

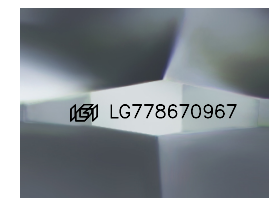
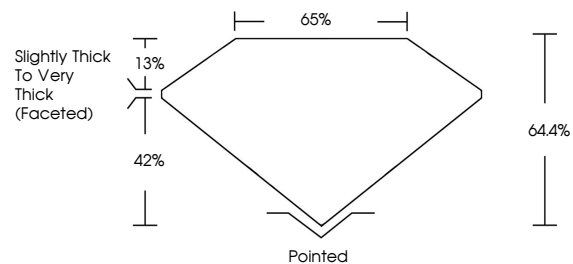
Carat Weight 2.51 CARATS Color Grade FANCY VIVID PINK Clarity Grade VVS 2

ADDITIONAL GRADING INFORMATION

Polish EXCELLENT Symmetry EXCELLENT Fluorescence SLIGHT Inscription(s) IGI LG778670967

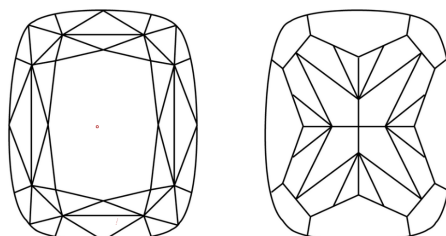
Comments: This Laboratory Grown Diamond was created by Chemical Vapor Deposition (CVD) growth process. Indications of post-growth treatment.

PROPORTIONS



Sample Image Used

CLARITY CHARACTERISTICS



KEY TO SYMBOLS

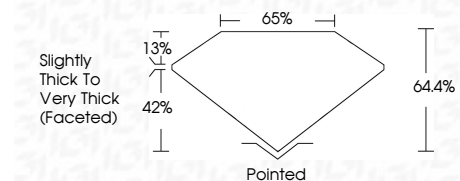
Red symbols indicate internal characteristics. Green symbols indicate external characteristics.

COLOR

D E F G H I J Faint Very Light Light

CLARITY

FL IF VS 1-2 VS 1-2 SI 1-2 I 1-3 Flawless Internally Flawless Very Very Slightly Included Very Slightly Included Slightly Included Included



ADDITIONAL GRADING INFORMATION

Polish EXCELLENT Symmetry EXCELLENT Fluorescence SLIGHT Inscription(s) IGI LG778670967 Comments: This Laboratory Grown Diamond was created by Chemical Vapor Deposition (CVD) growth process. Indications of post-growth treatment.



March 27, 2026 IGI Report No LG778670967 CUSHION MODIFIED BRILLIANT 9.27 X 6.79 X 4.37 MM 2.51 CARATS FANCY VIVID PINK VVS 2 64.4% 65% Slightly Thick To Very Thick (Faceted) Pointed EXCELLENT EXCELLENT SLIGHT IGI LG778670967 Comments: This Laboratory Grown Diamond was created by Chemical Vapor Deposition (CVD) growth process. Indications of post-growth treatment.