



ELECTRONIC COPY

LG778668404
Report verification at igi.org



March 26, 2026
IGI Report Number **LG778668404**
Description **LABORATORY GROWN DIAMOND**
Shape and Cutting Style **OVAL MODIFIED BRILLIANT**
Measurements **12.83 X 8.59 X 5.66 MM**

GRADING RESULTS
Carat Weight **5.02 CARATS**
Color Grade **FANCY VIVID YELLOW**
Clarity Grade **VS 2**

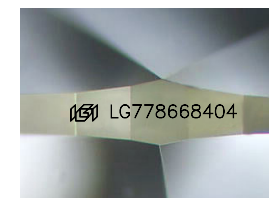
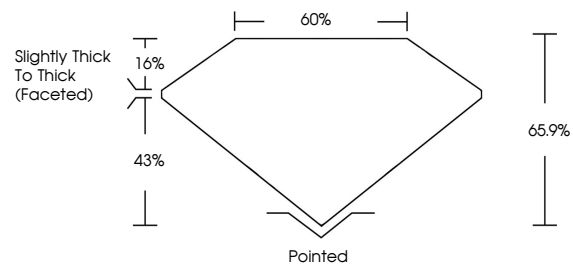
March 26, 2026
IGI Report Number **LG778668404**
Description **LABORATORY GROWN DIAMOND**
Shape and Cutting Style **OVAL MODIFIED BRILLIANT**
Measurements **12.83 X 8.59 X 5.66 MM**

GRADING RESULTS
Carat Weight **5.02 CARATS**
Color Grade **FANCY VIVID YELLOW**
Clarity Grade **VS 2**

ADDITIONAL GRADING INFORMATION
Polish **EXCELLENT**
Symmetry **EXCELLENT**
Fluorescence **NONE**
Inscription(s) **IGI LG778668404**

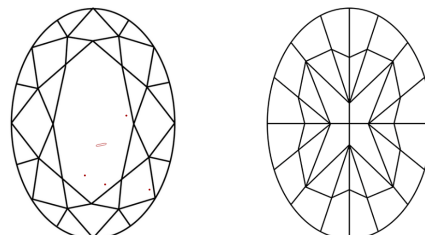
Comments: This Laboratory Grown Diamond was created by Chemical Vapor Deposition (CVD) growth process.

PROPORTIONS



Sample Image Used

CLARITY CHARACTERISTICS



KEY TO SYMBOLS

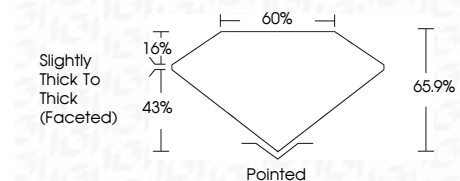
Red symbols indicate internal characteristics.
Green symbols indicate external characteristics.

COLOR

D E F G H I J Faint Very Light Light

CLARITY

| FL | IF | VS ¹⁻² | VS ¹⁻² | SI ¹⁻² | I ¹⁻³ |
|----------|---------------------|-----------------------------|------------------------|-------------------|------------------|
| Flawless | Internally Flawless | Very Very Slightly Included | Very Slightly Included | Slightly Included | Included |



ADDITIONAL GRADING INFORMATION

Polish **EXCELLENT**
Symmetry **EXCELLENT**
Fluorescence **NONE**
Inscription(s) **IGI LG778668404**
Comments: This Laboratory Grown Diamond was created by Chemical Vapor Deposition (CVD) growth process.



March 26, 2026
IGI Report No **LG778668404**
OVAL MODIFIED BRILLIANT
12.83 X 8.59 X 5.66 MM
Carat Weight **5.02 CARATS**
Color Grade **FANCY VIVID YELLOW**
Clarity Grade **VS 2**
Depth **65.9%**
Table **16%**
Girdle **Slightly Thick To Thick (Faceted)**
Culet **Pointed**
Polish **EXCELLENT**
Symmetry **EXCELLENT**
Fluorescence **NONE**
Inscription(s) **IGI LG778668404**
Comments: This Laboratory Grown Diamond was created by Chemical Vapor Deposition (CVD) growth process.