



ELECTRONIC COPY

LG778668399
Report verification at igi.org



March 26, 2026
IGI Report Number LG778668399
Description LABORATORY GROWN DIAMOND
Shape and Cutting Style CUT CORNERED RECTANGULAR MODIFIED BRILLIANT
Measurements 12.07 X 8.53 X 6.03 MM
GRADING RESULTS
Carat Weight 6.09 CARATS
Color Grade FANCY INTENSE YELLOW
Clarity Grade VVS 2

March 26, 2026
IGI Report Number LG778668399
Description LABORATORY GROWN DIAMOND
Shape and Cutting Style CUT CORNERED RECTANGULAR MODIFIED BRILLIANT
Measurements 12.07 X 8.53 X 6.03 MM

GRADING RESULTS

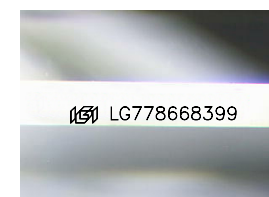
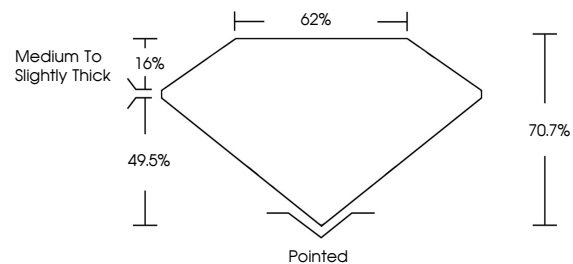
Carat Weight 6.09 CARATS
Color Grade FANCY INTENSE YELLOW
Clarity Grade VVS 2

ADDITIONAL GRADING INFORMATION

Polish EXCELLENT
Symmetry EXCELLENT
Fluorescence NONE
Inscription(s) LG778668399

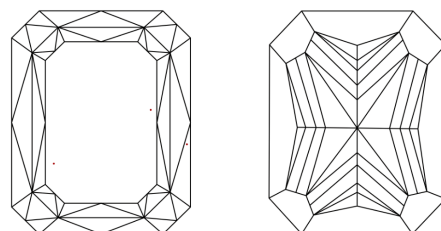
Comments: This Laboratory Grown Diamond was created by Chemical Vapor Deposition (CVD) growth process.

PROPORTIONS



Sample Image Used

CLARITY CHARACTERISTICS



KEY TO SYMBOLS

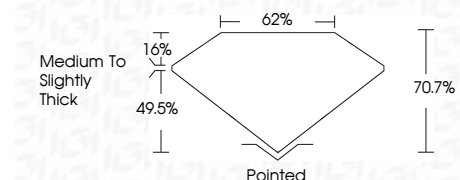
Red symbols indicate internal characteristics.
Green symbols indicate external characteristics.

COLOR

D E F G H I J Faint Very Light Light

CLARITY

FL IF VVS 1-2 VS 1-2 SI 1-2 I 1-3
Flawless Internally Flawless Very Very Slightly Included Very Slightly Included Slightly Included Included



ADDITIONAL GRADING INFORMATION

Polish EXCELLENT
Symmetry EXCELLENT
Fluorescence NONE
Inscription(s) LG778668399
Comments: This Laboratory Grown Diamond was created by Chemical Vapor Deposition (CVD) growth process.



March 26, 2026
IGI Report No LG778668399
CUT CORNERED RECT. MODIFIED BRILLIANT
12.07 X 8.53 X 6.03 MM
6.09 CARATS
FANCY INTENSE YELLOW
VVS 2
70.7%
62%
Medium to Slightly Thick
Pointed
EXCELLENT
EXCELLENT
NONE
Inscription(s) LG778668399
Comments: This Laboratory Grown Diamond was created by Chemical Vapor Deposition (CVD) growth process.