



ELECTRONIC COPY

LG778668377
Report verification at igi.org



March 20, 2026
IGI Report Number **LG778668377**
Description **LABORATORY GROWN DIAMOND**
Shape and Cutting Style **RECTANGULAR CUSHION
MODIFIED BRILLIANT**
Measurements **7.27 X 5.70 X 4.08 MM**
GRADING RESULTS
Carat Weight **1.58 CARAT**
Color Grade **FANCY VIVID YELLOW**
Clarity Grade **VVS 2**

March 20, 2026
IGI Report Number **LG778668377**
Description **LABORATORY GROWN DIAMOND**
Shape and Cutting Style **RECTANGULAR CUSHION
MODIFIED BRILLIANT**
Measurements **7.27 X 5.70 X 4.08 MM**

GRADING RESULTS

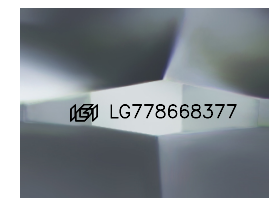
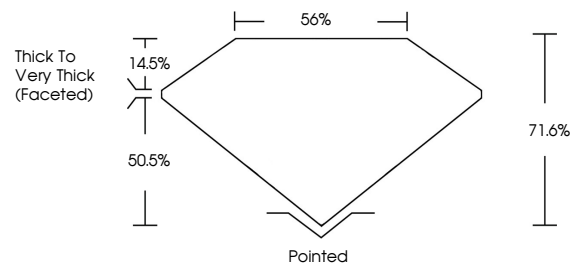
Carat Weight **1.58 CARAT**
Color Grade **FANCY VIVID YELLOW**
Clarity Grade **VVS 2**

ADDITIONAL GRADING INFORMATION

Polish **EXCELLENT**
Symmetry **EXCELLENT**
Fluorescence **NONE**
Inscription(s) **IGI LG778668377**

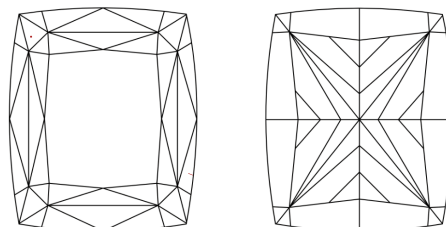
Comments: This Laboratory Grown Diamond was created by Chemical Vapor Deposition (CVD) growth process.

PROPORTIONS



Sample Image Used

CLARITY CHARACTERISTICS



KEY TO SYMBOLS

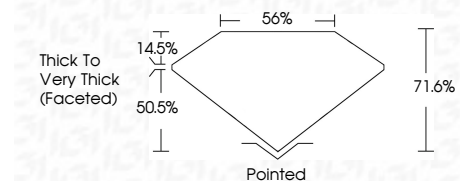
Red symbols indicate internal characteristics.
Green symbols indicate external characteristics.

COLOR

D E F G H I J Faint Very Light Light

CLARITY

FL	IF	VVS ¹⁻²	VS ¹⁻²	SI ¹⁻²	I ¹⁻³
Flawless	Internally Flawless	Very Very Slightly Included	Very Slightly Included	Slightly Included	Included



ADDITIONAL GRADING INFORMATION

Polish **EXCELLENT**
Symmetry **EXCELLENT**
Fluorescence **NONE**
Inscription(s) **IGI LG778668377**
Comments: This Laboratory Grown Diamond was created by Chemical Vapor Deposition (CVD) growth process.



IGI



March 20, 2026
IGI Report No LG778668377
RECTANGULAR CUSHION MODIFIED BRILLIANT
7.27 X 5.70 X 4.08 MM
1.58 CARAT
FANCY VIVID YELLOW
VVS 2
71.6%
50%
Thick to Very Thick (Faceted)
Pointed
EXCELLENT
EXCELLENT
NONE
IGI LG778668377
Comments: This Laboratory Grown Diamond was created by Chemical Vapor Deposition (CVD) growth process.