



ELECTRONIC COPY

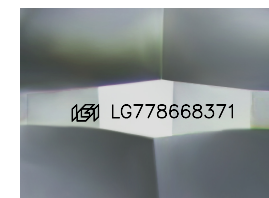
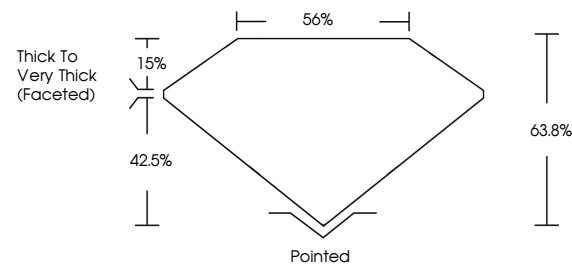
LG778668371
Report verification at igi.org



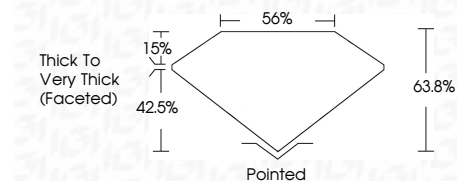
March 20, 2026
IGI Report Number LG778668371
Description LABORATORY GROWN DIAMOND
Shape and Cutting Style SQUARE CUSHION MODIFIED BRILLIANT
Measurements 7.66 X 7.55 X 4.82 MM
GRADING RESULTS
Carat Weight 2.50 CARATS
Color Grade FANCY INTENSE YELLOW
Clarity Grade VS 1

March 20, 2026
IGI Report Number LG778668371
Description LABORATORY GROWN DIAMOND
Shape and Cutting Style SQUARE CUSHION MODIFIED BRILLIANT
Measurements 7.66 X 7.55 X 4.82 MM

PROPORTIONS



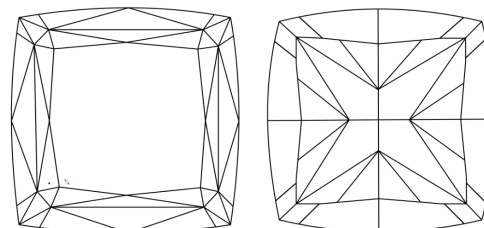
Sample Image Used



GRADING RESULTS

Carat Weight 2.50 CARATS
Color Grade FANCY INTENSE YELLOW
Clarity Grade VS 1

CLARITY CHARACTERISTICS



KEY TO SYMBOLS

Red symbols indicate internal characteristics.
Green symbols indicate external characteristics.

ADDITIONAL GRADING INFORMATION

Polish EXCELLENT
Symmetry EXCELLENT
Fluorescence NONE
Inscription(s) LG778668371

ADDITIONAL GRADING INFORMATION

Polish EXCELLENT
Symmetry EXCELLENT
Fluorescence NONE
Inscription(s) LG778668371
Comments: This Laboratory Grown Diamond was created by Chemical Vapor Deposition (CVD) growth process.

COLOR

D E F G H I J Faint Very Light Light

CLARITY

FL IF VS 1-2 VS 1-2 SI 1-2 I 1-3
Flawless Internally Flawless Very Very Slightly Included Very Slightly Included Slightly Included Included



March 20, 2026
IGI Report No LG778668371
SQUARE CUSHION MODIFIED BRILLIANT
7.66 X 7.55 X 4.82 MM
2.50 CARATS
FANCY INTENSE YELLOW
VS 1
63.8%
56%
Thick to Very Thick (Faceted)
Pointed
EXCELLENT
EXCELLENT
NONE
LG778668371
Comments: This Laboratory Grown Diamond was created by Chemical Vapor Deposition (CVD) growth process.