



ELECTRONIC COPY

LG778668362
Report verification at igi.org



March 24, 2026
IGI Report Number **LG778668362**
Description **LABORATORY GROWN DIAMOND**
Shape and Cutting Style **SQUARE CUSHION MODIFIED BRILLIANT**
Measurements **5.66 X 5.66 X 3.75 MM**
GRADING RESULTS
Carat Weight **1.06 CARAT**
Color Grade **FANCY YELLOW**
Clarity Grade **VVS 2**

March 24, 2026
IGI Report Number **LG778668362**
Description **LABORATORY GROWN DIAMOND**
Shape and Cutting Style **SQUARE CUSHION MODIFIED BRILLIANT**
Measurements **5.66 X 5.66 X 3.75 MM**

GRADING RESULTS

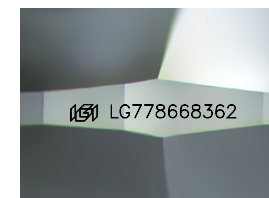
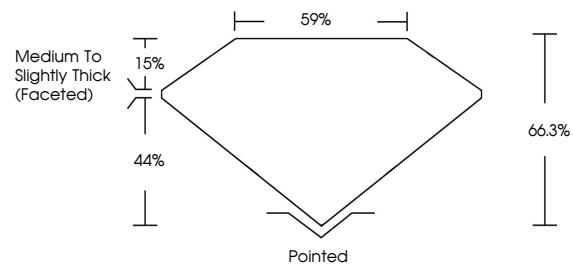
Carat Weight **1.06 CARAT**
Color Grade **FANCY YELLOW**
Clarity Grade **VVS 2**

ADDITIONAL GRADING INFORMATION

Polish **EXCELLENT**
Symmetry **EXCELLENT**
Fluorescence **NONE**
Inscription(s) **IGI LG778668362**

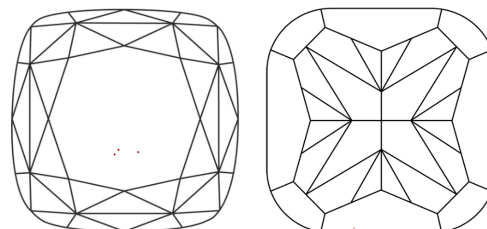
Comments: This Laboratory Grown Diamond was created by Chemical Vapor Deposition (CVD) growth process.

PROPORTIONS



Sample Image Used

CLARITY CHARACTERISTICS



KEY TO SYMBOLS

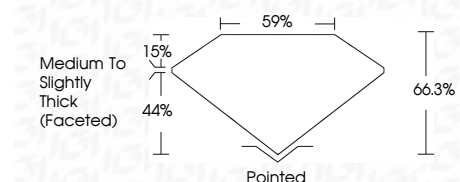
Red symbols indicate internal characteristics.
Green symbols indicate external characteristics.

COLOR

D E F G H I J Faint Very Light Light

CLARITY

| FL | IF | VVS ¹⁻² | VS ¹⁻² | SI ¹⁻² | I ¹⁻³ |
|----------|---------------------|-----------------------------|------------------------|-------------------|------------------|
| Flawless | Internally Flawless | Very Very Slightly Included | Very Slightly Included | Slightly Included | Included |



ADDITIONAL GRADING INFORMATION

Polish **EXCELLENT**
Symmetry **EXCELLENT**
Fluorescence **NONE**
Inscription(s) **IGI LG778668362**
Comments: This Laboratory Grown Diamond was created by Chemical Vapor Deposition (CVD) growth process.



March 24, 2026
IGI Report No LG778668362
SQUARE CUSHION MODIFIED BRILLIANT
5.66 X 5.66 X 3.75 MM
1.06 CARAT
FANCY YELLOW
VVS 2
66.3%
44%
15%
Medium to Slightly Thick (Faceted)
Pointed
EXCELLENT
EXCELLENT
NONE
IGI LG778668362
Comments: This Laboratory Grown Diamond was created by Chemical Vapor Deposition (CVD) growth process.