



**ELECTRONIC COPY**

LG778664813  
Report verification at igi.org



March 23, 2026

IGI Report Number **LG778664813**

Description **LABORATORY GROWN DIAMOND**

Shape and Cutting Style **PRINCESS CUT**

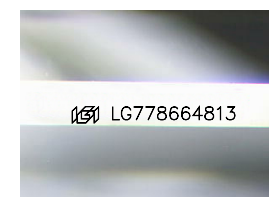
Measurements **7.45 X 7.44 X 5.41 MM**

**GRADING RESULTS**

Carat Weight **2.58 CARATS**

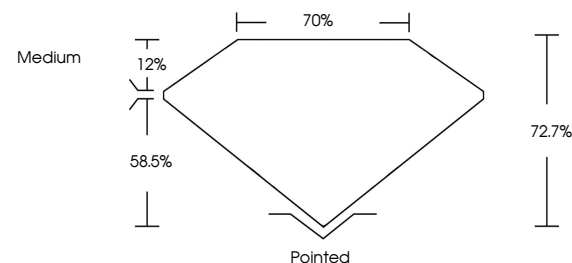
Color Grade **E**

Clarity Grade **VVS 2**

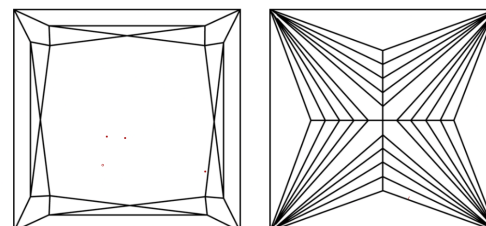


Sample Image Used

**PROPORTIONS**



**CLARITY CHARACTERISTICS**



**KEY TO SYMBOLS**

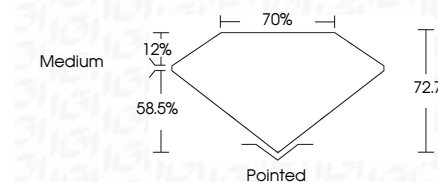
Red symbols indicate internal characteristics.  
Green symbols indicate external characteristics.

**COLOR**

D E F G H I J Faint Very Light Light

**CLARITY**

FL	IF	VVS <sup>1-2</sup>	VS <sup>1-2</sup>	SI <sup>1-2</sup>	I <sup>1-3</sup>
Flawless	Internally Flawless	Very Very Slightly Included	Very Slightly Included	Slightly Included	Included



**ADDITIONAL GRADING INFORMATION**

Polish **EXCELLENT**

Symmetry **EXCELLENT**

Fluorescence **NONE**

Inscription(s) **IGI LG778664813**

Comments: This Laboratory Grown Diamond was created by Chemical Vapor Deposition (CVD) growth process. Type IIa



**IGI**



March 23, 2026  
IGI Report No LG778664813  
**PRINCESS CUT**  
2.58 CARATS  
E  
7.45 X 7.44 X 5.41 MM  
Color Grade  
Clarity Grade  
Depth  
Table  
Girdle  
Medium  
Pointed  
EXCELLENT  
EXCELLENT  
NONE  
IGI LG778664813  
Comments: This Laboratory Grown Diamond was created by Chemical Vapor Deposition (CVD) growth process. Type IIa