



**ELECTRONIC COPY**

LG778664511  
Report verification at igi.org



March 17, 2026  
IGI Report Number **LG778664511**  
Description **LABORATORY GROWN DIAMOND**  
Shape and Cutting Style **SQUARE CUSHION MODIFIED BRILLIANT**  
Measurements **8.70 X 8.69 X 6.29 MM**  
**GRADING RESULTS**  
Carat Weight **4.07 CARATS**  
Color Grade **FANCY YELLOW**  
Clarity Grade **VS 2**

March 17, 2026  
IGI Report Number **LG778664511**  
Description **LABORATORY GROWN DIAMOND**  
Shape and Cutting Style **SQUARE CUSHION MODIFIED BRILLIANT**  
Measurements **8.70 X 8.69 X 6.29 MM**

**GRADING RESULTS**

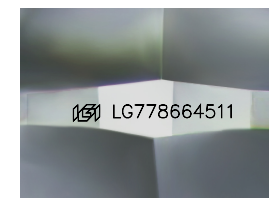
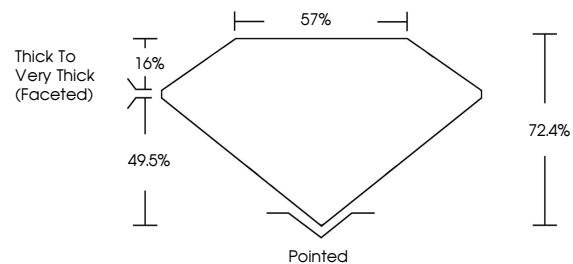
Carat Weight **4.07 CARATS**  
Color Grade **FANCY YELLOW**  
Clarity Grade **VS 2**

**ADDITIONAL GRADING INFORMATION**

Polish **EXCELLENT**  
Symmetry **EXCELLENT**  
Fluorescence **NONE**  
Inscription(s) **IGI LG778664511**

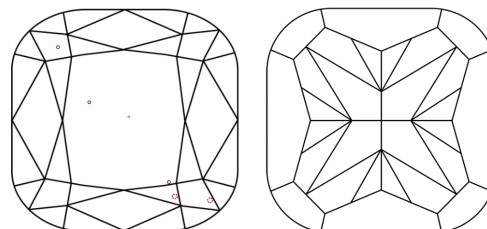
Comments: This Laboratory Grown Diamond was created by Chemical Vapor Deposition (CVD) growth process.

**PROPORTIONS**



Sample Image Used

**CLARITY CHARACTERISTICS**



**KEY TO SYMBOLS**

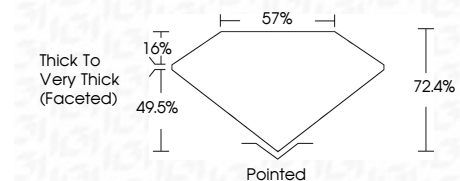
Red symbols indicate internal characteristics.  
Green symbols indicate external characteristics.

**COLOR**

D E F G H I J Faint Very Light Light

**CLARITY**

FL	IF	VS <sup>1-2</sup>	VS <sup>1-2</sup>	SI <sup>1-2</sup>	I <sup>1-3</sup>
Flawless	Internally Flawless	Very Very Slightly Included	Very Slightly Included	Slightly Included	Included



**ADDITIONAL GRADING INFORMATION**

Polish **EXCELLENT**  
Symmetry **EXCELLENT**  
Fluorescence **NONE**  
Inscription(s) **IGI LG778664511**  
Comments: This Laboratory Grown Diamond was created by Chemical Vapor Deposition (CVD) growth process.



March 17, 2026  
IGI Report No **LG778664511**  
**SQUARE CUSHION MODIFIED BRILLIANT**  
**4.07 CARATS**  
Carat Weight  
**FANCY YELLOW**  
Color Grade  
**VS 2**  
Clarity Grade  
**8.70 X 8.69 X 6.29 MM**  
Depth  
**72.4%**  
Table  
**57%**  
Girdle  
**Thick to Very Thick (Faceted)**  
Culet  
**Pointed**  
Polish  
**EXCELLENT**  
Symmetry  
**EXCELLENT**  
Fluorescence  
**NONE**  
Inscription(s)  
**IGI LG778664511**  
Comments: This Laboratory Grown Diamond was created by Chemical Vapor Deposition (CVD) growth process.