



**ELECTRONIC COPY**

LG778663831  
Report verification at igi.org



March 3, 2026  
IGI Report Number **LG778663831**  
Description **LABORATORY GROWN DIAMOND**  
Shape and Cutting Style **TRIANGULAR MODIFIED BRILLIANT**  
Measurements **16.01 X 15.98 X 8.37 MM**  
**GRADING RESULTS**  
Carat Weight **15.24 CARATS**  
Color Grade **FANCY INTENSE YELLOW**  
Clarity Grade **VS 1**

March 3, 2026  
IGI Report Number **LG778663831**  
Description **LABORATORY GROWN DIAMOND**  
Shape and Cutting Style **TRIANGULAR MODIFIED BRILLIANT**  
Measurements **16.01 X 15.98 X 8.37 MM**

**GRADING RESULTS**

Carat Weight **15.24 CARATS**  
Color Grade **FANCY INTENSE YELLOW**  
Clarity Grade **VS 1**

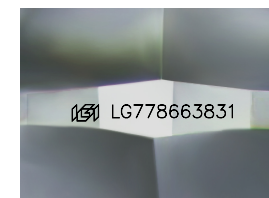
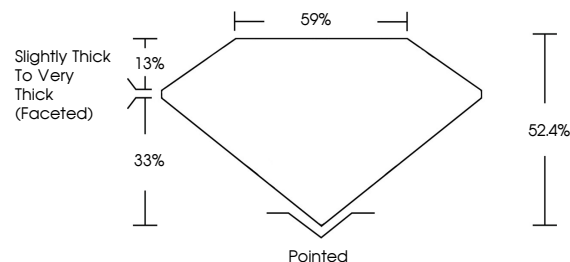
**ADDITIONAL GRADING INFORMATION**

Polish **EXCELLENT**  
Symmetry **EXCELLENT**  
Fluorescence **NONE**  
Inscription(s) **IGI LG778663831**

Comments: This Laboratory Grown Diamond was created by Chemical Vapor Deposition (CVD) growth process.

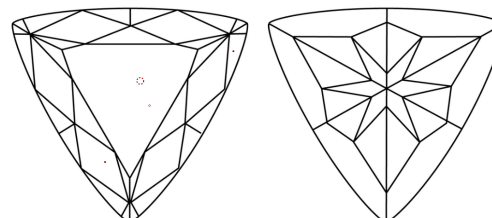
Secondary color: Grey

**PROPORTIONS**



Sample Image Used

**CLARITY CHARACTERISTICS**



**KEY TO SYMBOLS**

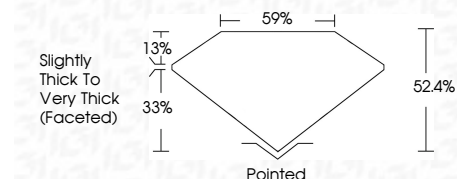
Red symbols indicate internal characteristics.  
Green symbols indicate external characteristics.

**COLOR**

D E F G H I J Faint Very Light Light

**CLARITY**

FL	IF	VS <sup>1-2</sup>	VS <sup>1-2</sup>	SI <sup>1-2</sup>	I <sup>1-3</sup>
Flawless	Internally Flawless	Very Very Slightly Included	Very Slightly Included	Slightly Included	Included



**ADDITIONAL GRADING INFORMATION**

Polish **EXCELLENT**  
Symmetry **EXCELLENT**  
Fluorescence **NONE**  
Inscription(s) **IGI LG778663831**  
Comments: This Laboratory Grown Diamond was created by Chemical Vapor Deposition (CVD) growth process.  
Secondary color: Grey



**IGI**



March 3, 2026  
IGI Report No LG778663831  
**TRIANGULAR MODIFIED BRILLIANT**  
16.01 X 15.98 X 8.37 MM  
15.24 CARATS  
Carat Weight  
Color Grade **FANCY INTENSE YELLOW**  
Clarity Grade **VS 1**  
Depth **52.4%**  
Table **59%**  
Girdle **Slightly Thick To Very Thick (Faceted)**  
Culet **Pointed**  
Polish **EXCELLENT**  
Symmetry **EXCELLENT**  
Fluorescence **NONE**  
Inscription(s) **IGI LG778663831**  
Comments: This Laboratory Grown Diamond was created by Chemical Vapor Deposition (CVD) growth process.  
Secondary color: Grey