



ELECTRONIC COPY

LG778659454
Report verification at igi.org



March 17, 2026
IGI Report Number **LG778659454**
Description **LABORATORY GROWN DIAMOND**
Shape and Cutting Style **HEART BRILLIANT**
Measurements **9.55 X 11.12 X 6.47 MM**
GRADING RESULTS
Carat Weight **5.07 CARATS**
Color Grade **FANCY INTENSE YELLOW**
Clarity Grade **VVS 2**

March 17, 2026
IGI Report Number **LG778659454**
Description **LABORATORY GROWN DIAMOND**
Shape and Cutting Style **HEART BRILLIANT**
Measurements **9.55 X 11.12 X 6.47 MM**

GRADING RESULTS

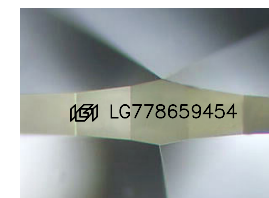
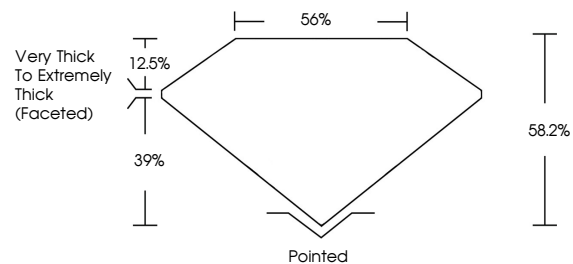
Carat Weight **5.07 CARATS**
Color Grade **FANCY INTENSE YELLOW**
Clarity Grade **VVS 2**

ADDITIONAL GRADING INFORMATION

Polish **EXCELLENT**
Symmetry **EXCELLENT**
Fluorescence **NONE**
Inscription(s) **IGI LG778659454**

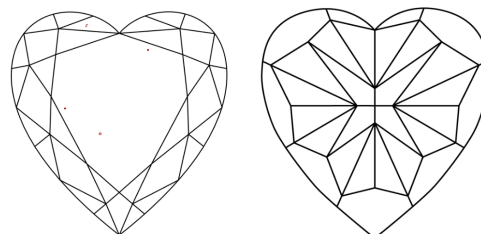
Comments: This Laboratory Grown Diamond was created by Chemical Vapor Deposition (CVD) growth process.

PROPORTIONS



Sample Image Used

CLARITY CHARACTERISTICS



KEY TO SYMBOLS

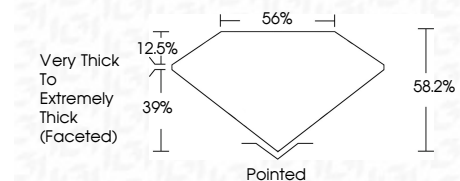
Red symbols indicate internal characteristics.
Green symbols indicate external characteristics.

COLOR

D E F G H I J Faint Very Light Light

CLARITY

FL	IF	VVS ¹⁻²	VS ¹⁻²	SI ¹⁻²	I ¹⁻³
Flawless	Internally Flawless	Very Very Slightly Included	Very Slightly Included	Slightly Included	Included



ADDITIONAL GRADING INFORMATION

Polish **EXCELLENT**
Symmetry **EXCELLENT**
Fluorescence **NONE**
Inscription(s) **IGI LG778659454**
Comments: This Laboratory Grown Diamond was created by Chemical Vapor Deposition (CVD) growth process.



March 17, 2026
IGI Report No LG778659454
HEART BRILLIANT
9.55 X 11.12 X 6.47 MM
5.07 CARATS
FANCY INTENSE YELLOW
VVS 2
58.2%
39%
Very Thick to Extremely Thick (Faceted)
Pointed
EXCELLENT
EXCELLENT
NONE
IGI LG778659454
Comments: This Laboratory Grown Diamond was created by Chemical Vapor Deposition (CVD) growth process.