



ELECTRONIC COPY

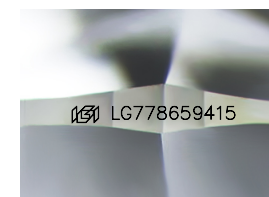
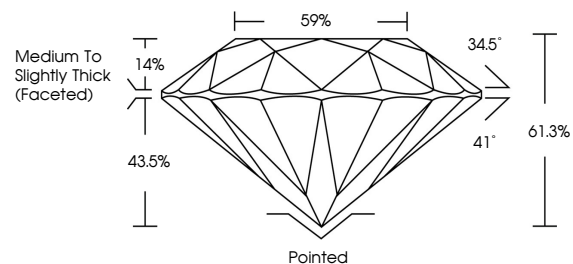
LG778659415
Report verification at igi.org



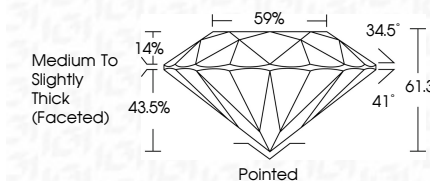
March 20, 2026
IGI Report Number **LG778659415**
Description **LABORATORY GROWN DIAMOND**
Shape and Cutting Style **ROUND BRILLIANT**
Measurements **12.28 - 12.33 X 7.54 MM**
GRADING RESULTS
Carat Weight **7.05 CARATS**
Color Grade **H**
Clarity Grade **VVS 2**
Cut Grade **IDEAL**

March 20, 2026
IGI Report Number **LG778659415**
Description **LABORATORY GROWN DIAMOND**
Shape and Cutting Style **ROUND BRILLIANT**
Measurements **12.28 - 12.33 X 7.54 MM**
GRADING RESULTS
Carat Weight **7.05 CARATS**
Color Grade **H**
Clarity Grade **VVS 2**
Cut Grade **IDEAL**

PROPORTIONS



Sample Image Used



ADDITIONAL GRADING INFORMATION

Polish **EXCELLENT**
Symmetry **EXCELLENT**
Fluorescence **NONE**
Inscription(s) **IGI LG778659415**

Comments: This Laboratory Grown Diamond was created by Chemical Vapor Deposition (CVD) growth process. Type IIa

ADDITIONAL GRADING INFORMATION

Polish **EXCELLENT**
Symmetry **EXCELLENT**
Fluorescence **NONE**
Inscription(s) **IGI LG778659415**
Comments: This Laboratory Grown Diamond was created by Chemical Vapor Deposition (CVD) growth process. Type IIa

COLOR

D E F G H I J Faint Very Light Light

CLARITY

FL	IF	VS ¹⁻²	VS ¹⁻²	SI ¹⁻²	I ¹⁻³
Flawless	Internally Flawless	Very Very Slightly Included	Very Slightly Included	Slightly Included	Included



IGI



March 20, 2026
IGI Report No **LG778659415**
ROUND BRILLIANT
12.28 - 12.33 X 7.54 MM
7.05 CARATS
H
VVS 2
IDEAL
61.3%
59%
Medium To Slightly Thick (Faceted)
Pointed
EXCELLENT
EXCELLENT
NONE
IGI LG778659415
Comments: This Laboratory Grown Diamond was created by Chemical Vapor Deposition (CVD) growth process. Type IIa