



**ELECTRONIC COPY**

LG778657997  
Report verification at igi.org



March 10, 2026

IGI Report Number **LG778657997**

Description **LABORATORY GROWN DIAMOND**

Shape and Cutting Style **CUT CORNERED  
RECTANGULAR MODIFIED  
BRILLIANT**

Measurements **12.12 X 8.22 X 5.53 MM**

**GRADING RESULTS**

Carat Weight **5.01 CARATS**

Color Grade **FANCY VIVID YELLOW**

Clarity Grade **VS 1**

**LABORATORY GROWN DIAMOND REPORT**

March 10, 2026

IGI Report Number **LG778657997**

Description **LABORATORY GROWN DIAMOND**

Shape and Cutting Style **CUT CORNERED RECTANGULAR  
MODIFIED BRILLIANT**

Measurements **12.12 X 8.22 X 5.53 MM**

**GRADING RESULTS**

Carat Weight **5.01 CARATS**

Color Grade **FANCY VIVID YELLOW**

Clarity Grade **VS 1**

**ADDITIONAL GRADING INFORMATION**

Polish **EXCELLENT**

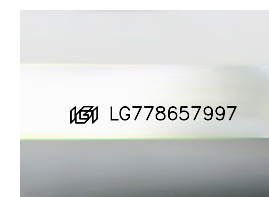
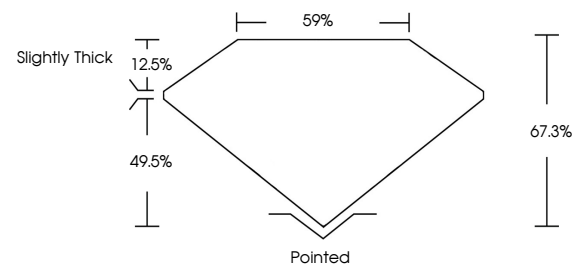
Symmetry **EXCELLENT**

Fluorescence **NONE**

Inscription(s) **IGI LG778657997**

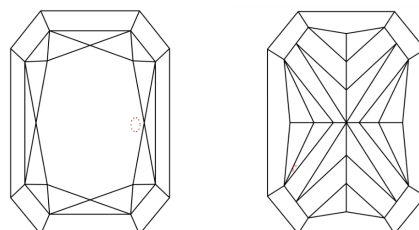
Comments: This Laboratory Grown Diamond was created by Chemical Vapor Deposition (CVD) growth process.

**PROPORTIONS**



Sample Image Used

**CLARITY CHARACTERISTICS**



**KEY TO SYMBOLS**

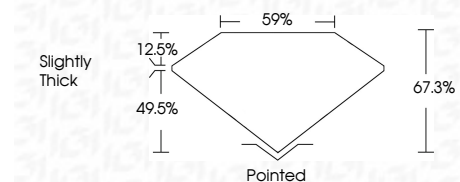
Red symbols indicate internal characteristics.  
Green symbols indicate external characteristics.

**COLOR**

D E F G H I J Faint Very Light Light

**CLARITY**

FL	IF	VS <sup>1-2</sup>	VS <sup>1-2</sup>	SI <sup>1-2</sup>	I <sup>1-3</sup>
Flawless	Internally Flawless	Very Very Slightly Included	Very Slightly Included	Slightly Included	Included



**ADDITIONAL GRADING INFORMATION**

Polish **EXCELLENT**

Symmetry **EXCELLENT**

Fluorescence **NONE**

Inscription(s) **IGI LG778657997**

Comments: This Laboratory Grown Diamond was created by Chemical Vapor Deposition (CVD) growth process.



**IGI**



March 10, 2026  
IGI Report No LG778657997  
CUT CORNERED RECT. MODIFIED BRILLIANT

12.12 X 8.22 X 5.53 MM

5.01 CARATS  
Carat Weight

FANCY VIVID YELLOW  
Color Grade

VS 1  
Clarity Grade

67.3%  
Depth

59%  
Table

Slightly Thick  
Girdle

Pointed  
Culet

EXCELLENT  
Polish

EXCELLENT  
Symmetry

NONE  
Fluorescence

IGI LG778657997  
Inscription(s)

Comments: This Laboratory Grown Diamond was created by Chemical Vapor Deposition (CVD) growth process.