



**ELECTRONIC COPY**

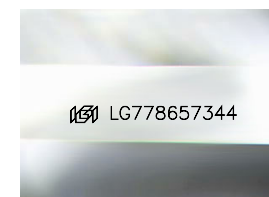
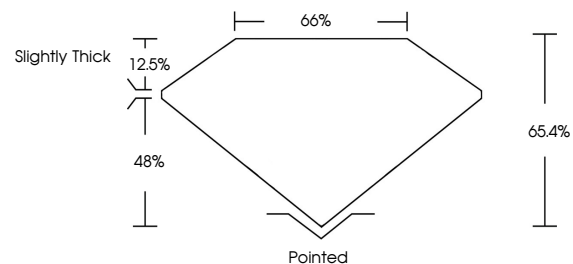
LG778657344  
Report verification at igi.org



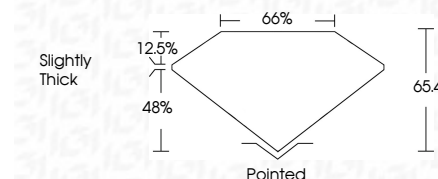
March 11, 2026  
IGI Report Number **LG778657344**  
Description **LABORATORY GROWN DIAMOND**  
Shape and Cutting Style **CUT CORNERED  
RECTANGULAR BRILLIANT**  
Measurements **9.38 X 6.25 X 4.09 MM**  
**GRADING RESULTS**  
Carat Weight **2.08 CARATS**  
Color Grade **G**  
Clarity Grade **VVS 2**

March 11, 2026  
IGI Report Number **LG778657344**  
Description **LABORATORY GROWN DIAMOND**  
Shape and Cutting Style **CUT CORNERED RECTANGULAR  
BRILLIANT**  
Measurements **9.38 X 6.25 X 4.09 MM**  
**GRADING RESULTS**  
Carat Weight **2.08 CARATS**  
Color Grade **G**  
Clarity Grade **VVS 2**

**PROPORTIONS**



Sample Image Used



**ADDITIONAL GRADING INFORMATION**

Polish **EXCELLENT**  
Symmetry **EXCELLENT**  
Fluorescence **NONE**  
Inscription(s) **IGI LG778657344**

Comments: This Laboratory Grown Diamond was created by Chemical Vapor Deposition (CVD) growth process. Type IIa

**ADDITIONAL GRADING INFORMATION**

Polish **EXCELLENT**  
Symmetry **EXCELLENT**  
Fluorescence **NONE**  
Inscription(s) **IGI LG778657344**  
Comments: This Laboratory Grown Diamond was created by Chemical Vapor Deposition (CVD) growth process. Type IIa

**COLOR**

D E F G H I J Faint Very Light Light

**CLARITY**

FL	IF	VVS <sup>1-2</sup>	VS <sup>1-2</sup>	SI <sup>1-2</sup>	I <sup>1-3</sup>
Flawless	Internally Flawless	Very Very Slightly Included	Very Slightly Included	Slightly Included	Included



**IGI**

March 11, 2026  
IGI Report No **LG778657344**  
**CUT CORNERED RECT. BRILLIANT**  
9.38 X 6.25 X 4.09 MM  
2.08 CARATS  
Color Grade **G**  
Clarity Grade **VVS 2**  
Table **66%**  
Girdle **65%**  
Slightly Thick  
Culet **Pointed**  
Polish **EXCELLENT**  
Symmetry **EXCELLENT**  
Fluorescence **NONE**  
Inscription(s) **IGI LG778657344**

Comments: This Laboratory Grown Diamond was created by Chemical Vapor Deposition (CVD) growth process. Type IIa