



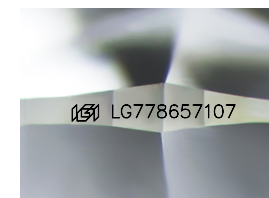
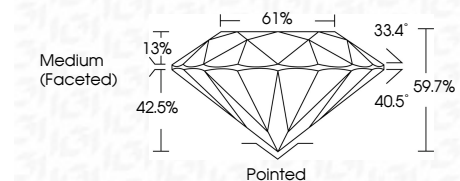
ELECTRONIC COPY

LG778657107
Report verification at igi.org



March 9, 2026
IGI Report Number LG778657107
Description LABORATORY GROWN DIAMOND
Shape and Cutting Style ROUND BRILLIANT
Measurements 9.82 - 9.87 X 5.88 MM

GRADING RESULTS
Carat Weight 3.54 CARATS
Color Grade E
Clarity Grade VVS 2
Cut Grade EXCELLENT



Sample Image Used

ADDITIONAL GRADING INFORMATION
Polish EXCELLENT
Symmetry EXCELLENT
Fluorescence NONE
Inscription(s) IGI LG778657107
Comments: This Laboratory Grown Diamond was created by Chemical Vapor Deposition (CVD) growth process. Type IIa



March 9, 2026
IGI Report No LG778657107
ROUND BRILLIANT
9.82 - 9.87 X 5.88 MM
3.54 CARATS E
VVS 2 EXCELLENT
9.82 - 9.87 X 5.88 MM
EXCELLENT
61%
Medium (Faceted)
Pointed EXCELLENT
Symmetry EXCELLENT
Fluorescence NONE
Inscription(s) IGI LG778657107
Comments: This Laboratory Grown Diamond was created by Chemical Vapor Deposition (CVD) growth process. Type IIa

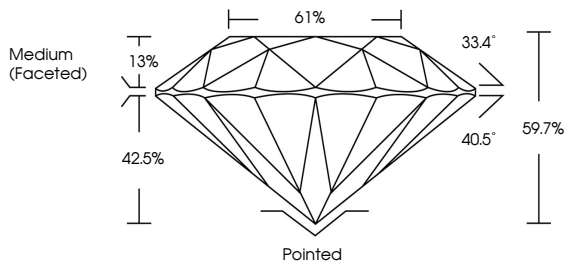
March 9, 2026
IGI Report Number LG778657107
Description LABORATORY GROWN DIAMOND
Shape and Cutting Style ROUND BRILLIANT
Measurements 9.82 - 9.87 X 5.88 MM

GRADING RESULTS
Carat Weight 3.54 CARATS
Color Grade E
Clarity Grade VVS 2
Cut Grade EXCELLENT

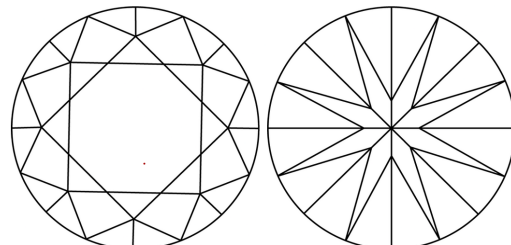
ADDITIONAL GRADING INFORMATION
Polish EXCELLENT
Symmetry EXCELLENT
Fluorescence NONE
Inscription(s) IGI LG778657107

Comments: This Laboratory Grown Diamond was created by Chemical Vapor Deposition (CVD) growth process. Type IIa

PROPORTIONS



CLARITY CHARACTERISTICS



KEY TO SYMBOLS
Red symbols indicate internal characteristics.
Green symbols indicate external characteristics.

Table with 10 columns: D, E, F, G, H, I, J, Faint, Very Light, Light

Table with 6 columns: FL, IF, VS 1-2, VS 1-2, SI 1-2, I 1-3

