



Light Performance Grade: Exceptional



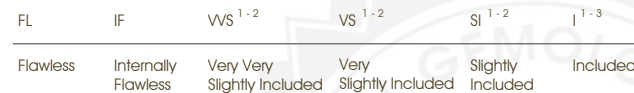
Structured Light Environment Representation



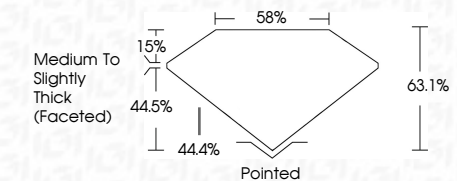
COLOR



CLARITY



February 25, 2026 IGI Report Number LG778654377 Description LABORATORY GROWN DIAMOND Shape and Cutting Style MARQUISE BRILLIANT Measurements 14.91 X 7.40 X 4.67 MM GRADING RESULTS Carat Weight 3.02 CARATS Color Grade E Clarity Grade VVS 1



ADDITIONAL GRADING INFORMATION Polish EXCELLENT Symmetry EXCELLENT Fluorescence NONE Inscription(s) IGI LG778654377 Comments: This Laboratory Grown Diamond was created by Chemical Vapor Deposition (CVD) growth process. Type IIa



February 25, 2026 IGI Report No LG778654377 MARQUISE BRILLIANT 14.91 X 7.40 X 4.67 MM 3.02 CARATS E VVS 1 63.1% 58% Medium To Slightly Thick (Faceted) Pointed EXCELLENT EXCELLENT NONE IGI LG778654377

Comments: This Laboratory Grown Diamond was created by Chemical Vapor Deposition (CVD) growth process. Type IIa

ELECTRONIC COPY LABORATORY GROWN DIAMOND REPORT

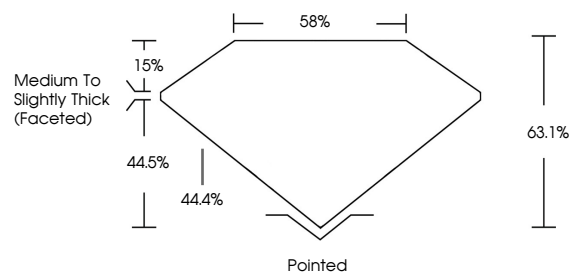
February 25, 2026 IGI Report Number LG778654377 Description LABORATORY GROWN DIAMOND Shape and Cutting Style MARQUISE BRILLIANT Measurements 14.91 x 7.40 x 4.67 mm

GRADING RESULTS Carat Weight 3.02 CARATS Color Grade E Clarity Grade VVS 1

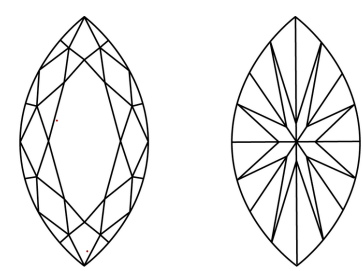
ADDITIONAL GRADING INFORMATION Polish EXCELLENT Symmetry EXCELLENT Fluorescence NONE Inscription(s) IGI LG778654377

Comments: This Laboratory Grown Diamond was created by Chemical Vapor Deposition (CVD) growth process. Type IIa

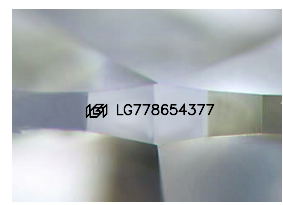
PROPORTIONS



CLARITY CHARACTERISTICS



KEY TO SYMBOLS Red symbols indicate internal characteristics. Green symbols indicate external characteristics.



Sample Image Used

