

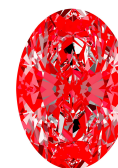


**INTERNATIONAL
GEMOLOGICAL
INSTITUTE**

LG778654368
Report verification at igi.org

LIGHT PERFORMANCE REPORT

Light Performance Grade: Exceptional



Structured Light Environment Representation



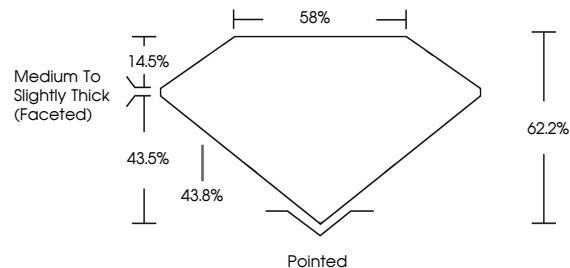
COLOR

D E F G H I J Faint Very Light Light

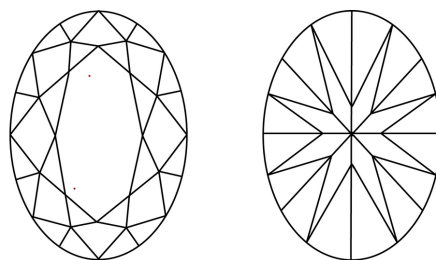
CLARITY

FL	IF	VS ¹⁻²	VS ¹⁻²	SI ¹⁻²	I ¹⁻³
Flawless	Internally Flawless	Very Very Slightly Included	Very Slightly Included	Slightly Included	Included

PROPORTIONS



CLARITY CHARACTERISTICS



KEY TO SYMBOLS

Red symbols indicate internal characteristics.
Green symbols indicate external characteristics.

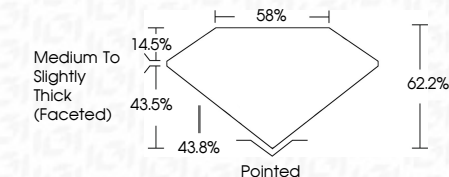


Sample Image Used

www.igi.org



February 25, 2026
IGI Report Number **LG778654368**
Description **LABORATORY GROWN DIAMOND**
Shape and Cutting Style **OVAL BRILLIANT**
Measurements **13.50 X 9.09 X 5.65 MM**
GRADING RESULTS
Carat Weight **4.34 CARATS**
Color Grade **D**
Clarity Grade **VVS 2**



ADDITIONAL GRADING INFORMATION

Polish **EXCELLENT**
Symmetry **EXCELLENT**
Fluorescence **NONE**
Inscription(s) **IGI LG778654368**
Comments: This Laboratory Grown Diamond was created by Chemical Vapor Deposition (CVD) growth process.
Type IIa



IGI

February 25, 2026
IGI Report No LG778654368
OVAL BRILLIANT
13.50 X 9.09 X 5.65 MM
Color Grade **D**
Carat Weight **4.34 CARATS**
Clarity Grade **VVS 2**
Table **62.2%**
Depth **58%**
Girdle **Medium To Slightly Thick (Faceted)**
Culet **Pointed**
Polish **EXCELLENT**
Symmetry **EXCELLENT**
Fluorescence **NONE**
Inscription(s) **IGI LG778654368**

Comments: This Laboratory Grown Diamond was created by Chemical Vapor Deposition (CVD) growth process.
Type IIa