



**ELECTRONIC COPY**

LG778652902  
Report verification at igi.org



March 3, 2026

IGI Report Number **LG778652902**

Description **LABORATORY GROWN DIAMOND**

Shape and Cutting Style **ROUND BRILLIANT**

Measurements **9.57 - 9.61 X 5.80 MM**

**GRADING RESULTS**

Carat Weight **3.27 CARATS**

Color Grade **D**

Clarity Grade **VVS 1**

Cut Grade **IDEAL**

March 3, 2026  
IGI Report Number **LG778652902**  
Description **LABORATORY GROWN DIAMOND**  
Shape and Cutting Style **ROUND BRILLIANT**  
Measurements **9.57 - 9.61 X 5.80 MM**

**GRADING RESULTS**

Carat Weight **3.27 CARATS**

Color Grade **D**

Clarity Grade **VVS 1**

Cut Grade **IDEAL**

**ADDITIONAL GRADING INFORMATION**

Polish **EXCELLENT**

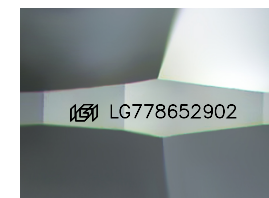
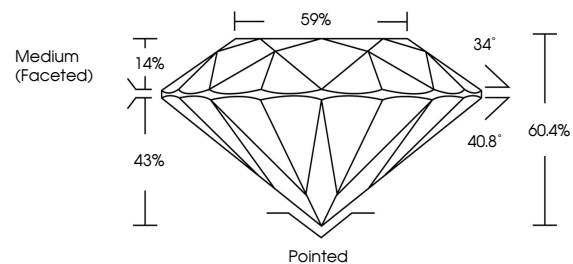
Symmetry **EXCELLENT**

Fluorescence **NONE**

Inscription(s) **IGI LG778652902**

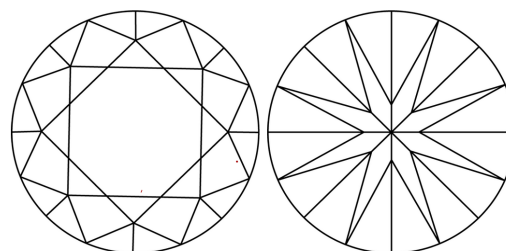
Comments: This Laboratory Grown Diamond was created by Chemical Vapor Deposition (CVD) growth process.  
Type IIa

**PROPORTIONS**



Sample Image Used

**CLARITY CHARACTERISTICS**



**KEY TO SYMBOLS**

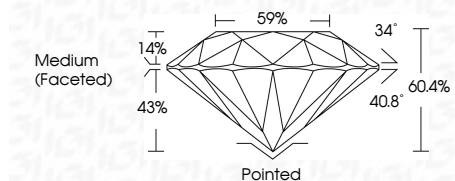
Red symbols indicate internal characteristics.  
Green symbols indicate external characteristics.

**COLOR**

D E F G H I J Faint Very Light Light

**CLARITY**

FL	IF	VVS <sup>1-2</sup>	VS <sup>1-2</sup>	SI <sup>1-2</sup>	I <sup>1-3</sup>
Flawless	Internally Flawless	Very Very Slightly Included	Very Slightly Included	Slightly Included	Included



**ADDITIONAL GRADING INFORMATION**

Polish **EXCELLENT**

Symmetry **EXCELLENT**

Fluorescence **NONE**

Inscription(s) **IGI LG778652902**

Comments: This Laboratory Grown Diamond was created by Chemical Vapor Deposition (CVD) growth process.  
Type IIa



March 3, 2026	IGI Report No LG778652902	3.27 CARATS	D	Pointed	EXCELLENT	EXCELLENT	NONE	IGI LG778652902
ROUND BRILLIANT	9.57 - 9.61 X 5.80 MM	Color Grade	VVS 1	Depth	IDEAL	60.4%	59%	Medium (Faceted)
		Clarity Grade	VVS 1	Cut Grade	IDEAL	60.4%	59%	Medium (Faceted)
		Polish	EXCELLENT	Symmetry	EXCELLENT	NONE	NONE	IGI LG778652902
		Fluorescence	NONE	Inscription(s)	IGI LG778652902			

Comments: This Laboratory Grown Diamond was created by Chemical Vapor Deposition (CVD) growth process.  
Type IIa