



**ELECTRONIC COPY**

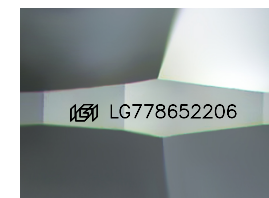
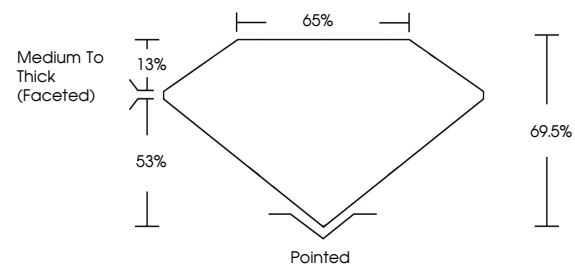
LG778652206  
Report verification at igi.org



March 3, 2026  
IGI Report Number **LG778652206**  
Description **LABORATORY GROWN DIAMOND**  
Shape and Cutting Style **CUSHION MODIFIED BRILLIANT**  
Measurements **10.95 X 7.29 X 5.07 MM**  
**GRADING RESULTS**  
Carat Weight **3.05 CARATS**  
Color Grade **F**  
Clarity Grade **VVS 2**

March 3, 2026  
IGI Report Number **LG778652206**  
Description **LABORATORY GROWN DIAMOND**  
Shape and Cutting Style **CUSHION MODIFIED BRILLIANT**  
Measurements **10.95 X 7.29 X 5.07 MM**

**PROPORTIONS**

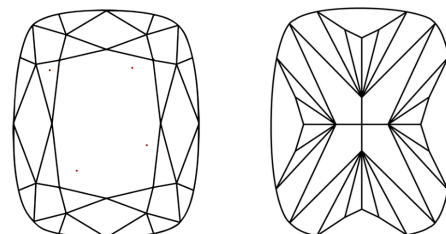


Sample Image Used

**GRADING RESULTS**

Carat Weight **3.05 CARATS**  
Color Grade **F**  
Clarity Grade **VVS 2**

**CLARITY CHARACTERISTICS**



**ADDITIONAL GRADING INFORMATION**

Polish **EXCELLENT**  
Symmetry **EXCELLENT**  
Fluorescence **NONE**  
Inscription(s) **IGI LG778652206**

Comments: This Laboratory Grown Diamond was created by Chemical Vapor Deposition (CVD) growth process. Type IIa

**KEY TO SYMBOLS**

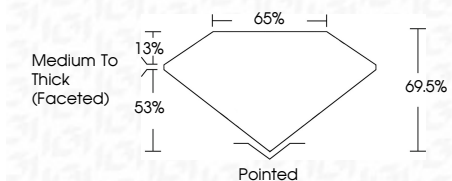
Red symbols indicate internal characteristics.  
Green symbols indicate external characteristics.

**COLOR**

D E F G H I J Faint Very Light Light

**CLARITY**

FL	IF	VVS <sup>1-2</sup>	VS <sup>1-2</sup>	SI <sup>1-2</sup>	I <sup>1-3</sup>
Flawless	Internally Flawless	Very Very Slightly Included	Very Slightly Included	Slightly Included	Included



**ADDITIONAL GRADING INFORMATION**

Polish **EXCELLENT**  
Symmetry **EXCELLENT**  
Fluorescence **NONE**  
Inscription(s) **IGI LG778652206**  
Comments: This Laboratory Grown Diamond was created by Chemical Vapor Deposition (CVD) growth process. Type IIa



March 3, 2026  
IGI Report No LG778652206  
CUSHION MODIFIED BRILLIANT  
3.05 CARATS  
F  
3.05 CARATS  
VVS 2  
10.95 X 7.29 X 5.07 MM  
69.5%  
53%  
Medium To Thick (Faceted)  
Pointed  
EXCELLENT  
EXCELLENT  
NONE  
IGI LG778652206  
Comments: This Laboratory Grown Diamond was created by Chemical Vapor Deposition (CVD) growth process. Type IIa