



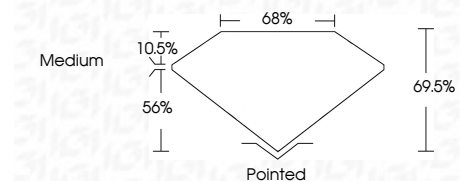
**ELECTRONIC COPY**

LG778646095  
Report verification at igi.org



March 5, 2026  
IGI Report Number **LG778646095**  
Description **LABORATORY GROWN DIAMOND**  
Shape and Cutting Style **PRINCESS CUT**  
Measurements **6.43 X 6.39 X 4.44 MM**

**GRADING RESULTS**  
Carat Weight **1.55 CARAT**  
Color Grade **E**  
Clarity Grade **VVS 2**



**ADDITIONAL GRADING INFORMATION**  
Polish **EXCELLENT**  
Symmetry **EXCELLENT**  
Fluorescence **NONE**  
Inscription(s) **IGI LG778646095**  
Comments: This Laboratory Grown Diamond was created by Chemical Vapor Deposition (CVD) growth process. Type IIa



March 5, 2026  
IGI Report No **LG778646095**  
**PRINCESS CUT**  
6.43 X 6.39 X 4.44 MM  
1.55 CARAT  
E  
VVS 2  
69.5%  
65%  
Medium  
Pointed  
EXCELLENT  
EXCELLENT  
NONE  
IGI LG778646095  
Comments: This Laboratory Grown Diamond was created by Chemical Vapor Deposition (CVD) growth process. Type IIa

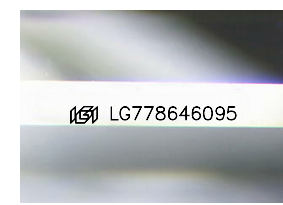
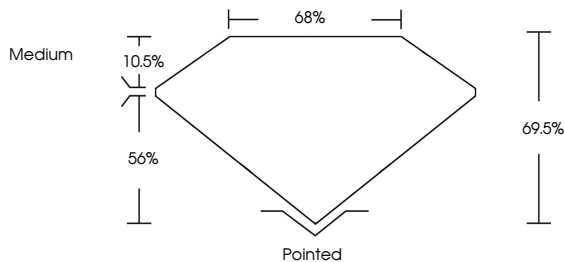
March 5, 2026  
IGI Report Number **LG778646095**  
Description **LABORATORY GROWN DIAMOND**  
Shape and Cutting Style **PRINCESS CUT**  
Measurements **6.43 X 6.39 X 4.44 MM**

**GRADING RESULTS**  
Carat Weight **1.55 CARAT**  
Color Grade **E**  
Clarity Grade **VVS 2**

**ADDITIONAL GRADING INFORMATION**  
Polish **EXCELLENT**  
Symmetry **EXCELLENT**  
Fluorescence **NONE**  
Inscription(s) **IGI LG778646095**

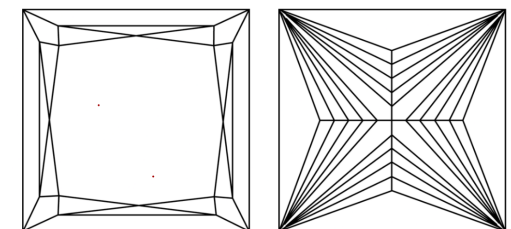
Comments: This Laboratory Grown Diamond was created by Chemical Vapor Deposition (CVD) growth process. Type IIa

**PROPORTIONS**



Sample Image Used

**CLARITY CHARACTERISTICS**



**KEY TO SYMBOLS**  
Red symbols indicate internal characteristics.  
Green symbols indicate external characteristics.

**COLOR**

D	E	F	G	H	I	J	Faint	Very Light	Light
---	---	---	---	---	---	---	-------	------------	-------

**CLARITY**

FL	IF	VVS <sup>1-2</sup>	VS <sup>1-2</sup>	SI <sup>1-2</sup>	I <sup>1-3</sup>
Flawless	Internally Flawless	Very Very Slightly Included	Very Slightly Included	Slightly Included	Included

