



ELECTRONIC COPY

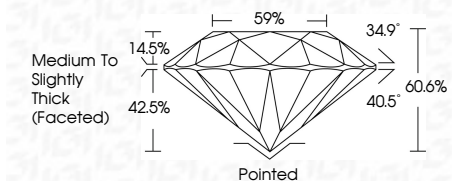
LG778645961 Report verification at igi.org



March 20, 2026 IGI Report Number LG778645961 Description LABORATORY GROWN DIAMOND Shape and Cutting Style ROUND BRILLIANT Measurements 6.46 - 6.48 X 3.92 MM

GRADING RESULTS

Carat Weight 1.01 CARAT Color Grade D Clarity Grade VVS 2 Cut Grade IDEAL



ADDITIONAL GRADING INFORMATION

Polish EXCELLENT Symmetry EXCELLENT Fluorescence NONE Inscription(s) IGI LG778645961 Comments: As Grown - No indication of post-growth treatment. This Laboratory Grown Diamond was created by High Pressure High Temperature (HPHT) growth process. Type II



March 20, 2026 IGI Report No LG778645961 ROUND BRILLIANT 1.01 CARAT D 6.46 - 6.48 X 3.92 MM Color Grade IDEAL Clarity Grade VVS 2 Depth 60.6% Table 59% Girdle Medium To Slightly Thick (Faceted) Culet Pointed Polish EXCELLENT Symmetry EXCELLENT Fluorescence NONE Inscription(s) IGI LG778645961 Comments: As Grown - No indication of post-growth treatment. This Laboratory Grown Diamond was created by High Pressure High Temperature (HPHT) growth process. Type II

March 20, 2026 IGI Report Number LG778645961 Description LABORATORY GROWN DIAMOND Shape and Cutting Style ROUND BRILLIANT Measurements 6.46 - 6.48 X 3.92 MM

GRADING RESULTS

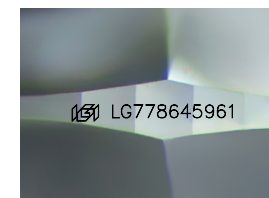
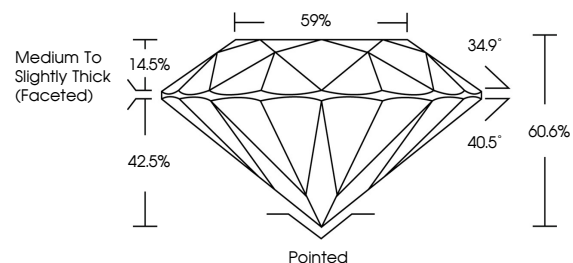
Carat Weight 1.01 CARAT Color Grade D Clarity Grade VVS 2 Cut Grade IDEAL

ADDITIONAL GRADING INFORMATION

Polish EXCELLENT Symmetry EXCELLENT Fluorescence NONE Inscription(s) IGI LG778645961

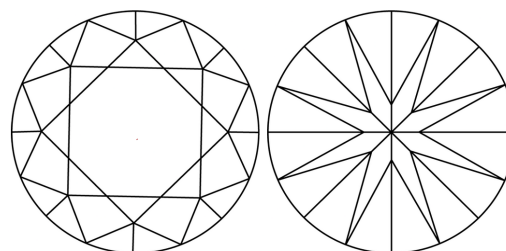
Comments: As Grown - No indication of post-growth treatment. This Laboratory Grown Diamond was created by High Pressure High Temperature (HPHT) growth process. Type II

PROPORTIONS



Sample Image Used

CLARITY CHARACTERISTICS



KEY TO SYMBOLS

Red symbols indicate internal characteristics. Green symbols indicate external characteristics.

COLOR

D E F G H I J Faint Very Light Light

CLARITY

FL IF VVS 1-2 VS 1-2 SI 1-2 I 1-3 Flawless Internally Flawless Very Very Slightly Included Very Slightly Included Slightly Included Included

