



ELECTRONIC COPY

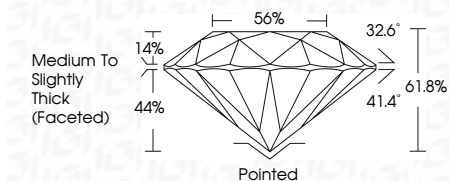
LG778645911 Report verification at igi.org



March 18, 2026 IGI Report Number LG778645911 Description LABORATORY GROWN DIAMOND Shape and Cutting Style ROUND BRILLIANT Measurements 6.42 - 6.45 X 3.97 MM

GRADING RESULTS

Carat Weight 1.00 CARAT Color Grade D Clarity Grade VVS 2 Cut Grade EXCELLENT



ADDITIONAL GRADING INFORMATION

Polish EXCELLENT Symmetry EXCELLENT Fluorescence NONE Inscription(s) IGI LG778645911 Comments: As Grown - No indication of post-growth treatment. This Laboratory Grown Diamond was created by High Pressure High Temperature (HPHT) growth process. Type II



IGI

March 18, 2026 IGI Report No LG778645911 ROUND BRILLIANT 6.42 - 6.45 X 3.97 MM 1.00 CARAT D EXCELLENT VVS 2 EXCELLENT 61.8% 56% Medium To Slightly Thick (Faceted) Pointed EXCELLENT EXCELLENT NONE IGI LG778645911 Comments: As Grown - No indication of post-growth treatment. This Laboratory Grown Diamond was created by High Pressure High Temperature (HPHT) growth process. Type II

March 18, 2026 IGI Report Number LG778645911 Description LABORATORY GROWN DIAMOND Shape and Cutting Style ROUND BRILLIANT Measurements 6.42 - 6.45 X 3.97 MM

GRADING RESULTS

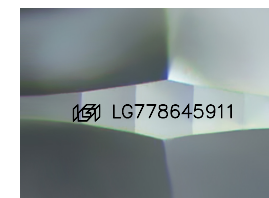
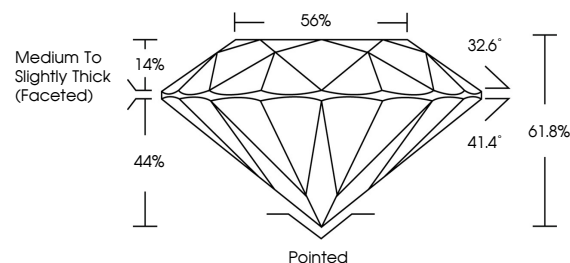
Carat Weight 1.00 CARAT Color Grade D Clarity Grade VVS 2 Cut Grade EXCELLENT

ADDITIONAL GRADING INFORMATION

Polish EXCELLENT Symmetry EXCELLENT Fluorescence NONE Inscription(s) IGI LG778645911

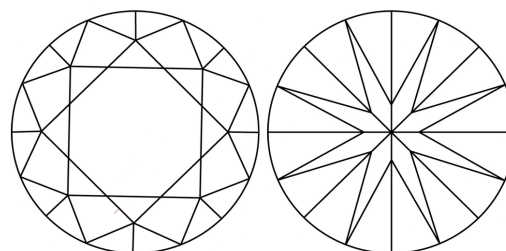
Comments: As Grown - No indication of post-growth treatment. This Laboratory Grown Diamond was created by High Pressure High Temperature (HPHT) growth process. Type II

PROPORTIONS



Sample Image Used

CLARITY CHARACTERISTICS



KEY TO SYMBOLS

Red symbols indicate internal characteristics. Green symbols indicate external characteristics.

COLOR

D E F G H I J Faint Very Light Light

CLARITY

FL IF VVS 1-2 VS 1-2 SI 1-2 I 1-3 Flawless Internally Flawless Very Very Slightly Included Very Slightly Included Slightly Included Included

