



ELECTRONIC COPY

LG778645524
Report verification at igi.org



March 5, 2026

IGI Report Number **LG778645524**

Description **LABORATORY GROWN DIAMOND**

Shape and Cutting Style **OVAL BRILLIANT**

Measurements **8.51 X 5.98 X 3.85 MM**

GRADING RESULTS

Carat Weight **1.22 CARAT**

Color Grade **D**

Clarity Grade **VVS 1**

March 5, 2026
IGI Report Number **LG778645524**
Description **LABORATORY GROWN DIAMOND**
Shape and Cutting Style **OVAL BRILLIANT**
Measurements **8.51 X 5.98 X 3.85 MM**

GRADING RESULTS

Carat Weight **1.22 CARAT**

Color Grade **D**

Clarity Grade **VVS 1**

ADDITIONAL GRADING INFORMATION

Polish **EXCELLENT**

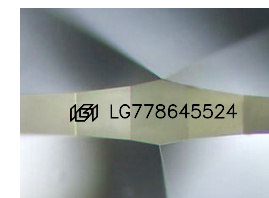
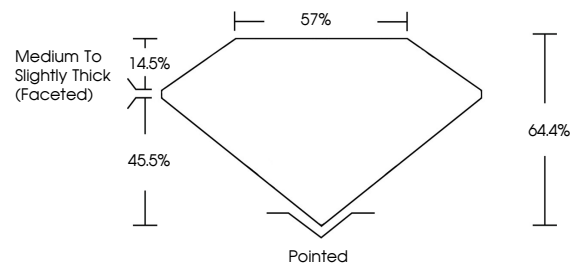
Symmetry **EXCELLENT**

Fluorescence **NONE**

Inscription(s) **IGI LG778645524**

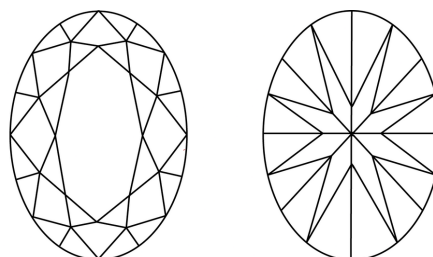
Comments: This Laboratory Grown Diamond was created by Chemical Vapor Deposition (CVD) growth process.
Type IIa

PROPORTIONS



Sample Image Used

CLARITY CHARACTERISTICS



KEY TO SYMBOLS

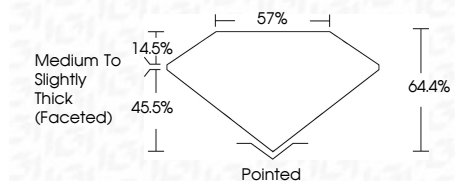
Red symbols indicate internal characteristics.
Green symbols indicate external characteristics.

COLOR

D E F G H I J Faint Very Light Light

CLARITY

FL	IF	VVS ¹⁻²	VS ¹⁻²	SI ¹⁻²	I ¹⁻³
Flawless	Internally Flawless	Very Very Slightly Included	Very Slightly Included	Slightly Included	Included



ADDITIONAL GRADING INFORMATION

Polish **EXCELLENT**

Symmetry **EXCELLENT**

Fluorescence **NONE**

Inscription(s) **IGI LG778645524**

Comments: This Laboratory Grown Diamond was created by Chemical Vapor Deposition (CVD) growth process.
Type IIa



March 5, 2026
IGI Report No LG778645524
OVAL BRILLIANT
8.51 X 5.98 X 3.85 MM
Carat Weight 1.22 CARAT
Color Grade D
Clarity Grade VVS 1
Table 14.5%
Depth 45.5%
Length 57%
Width 64.4%
Medium to Slightly Thick (Faceted)
Pointed
Polish EXCELLENT
Symmetry EXCELLENT
Fluorescence NONE
Inscription(s) IGI LG778645524

Comments: This Laboratory Grown Diamond was created by Chemical Vapor Deposition (CVD) growth process.
Type IIa