



ELECTRONIC COPY

LG778640478
Report verification at igi.org



March 17, 2026
IGI Report Number **LG778640478**
Description **LABORATORY GROWN DIAMOND**
Shape and Cutting Style **OVAL BRILLIANT**
Measurements **10.36 X 7.25 X 4.38 MM**
GRADING RESULTS
Carat Weight **2.05 CARATS**
Color Grade **FANCY VIVID BLUE**
Clarity Grade **VVS 1**

March 17, 2026
IGI Report Number **LG778640478**
Description **LABORATORY GROWN DIAMOND**
Shape and Cutting Style **OVAL BRILLIANT**
Measurements **10.36 X 7.25 X 4.38 MM**

GRADING RESULTS

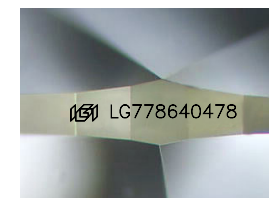
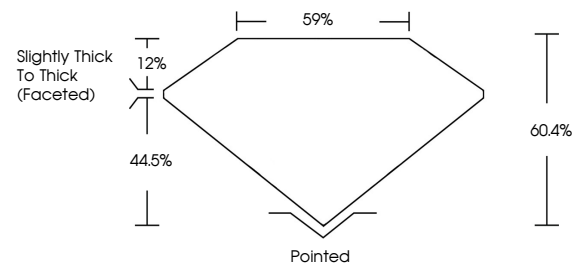
Carat Weight **2.05 CARATS**
Color Grade **FANCY VIVID BLUE**
Clarity Grade **VVS 1**

ADDITIONAL GRADING INFORMATION

Polish **EXCELLENT**
Symmetry **EXCELLENT**
Fluorescence **NONE**
Inscription(s) **IGI LG778640478**

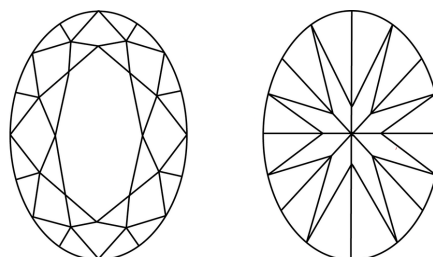
Comments: This Laboratory Grown Diamond was created by Chemical Vapor Deposition (CVD) growth process.
Indications of post-growth treatment.

PROPORTIONS



Sample Image Used

CLARITY CHARACTERISTICS



KEY TO SYMBOLS

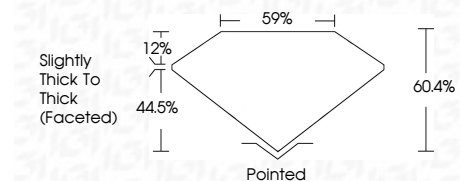
Red symbols indicate internal characteristics.
Green symbols indicate external characteristics.

COLOR

D E F G H I J Faint Very Light Light

CLARITY

FL	IF	VVS ¹⁻²	VS ¹⁻²	SI ¹⁻²	I ¹⁻³
Flawless	Internally Flawless	Very Very Slightly Included	Very Slightly Included	Slightly Included	Included



ADDITIONAL GRADING INFORMATION

Polish **EXCELLENT**
Symmetry **EXCELLENT**
Fluorescence **NONE**
Inscription(s) **IGI LG778640478**
Comments: This Laboratory Grown Diamond was created by Chemical Vapor Deposition (CVD) growth process.
Indications of post-growth treatment.



IGI



March 17, 2026
IGI Report No LG778640478
OVAL BRILLIANT
2.05 CARATS
Carat Weight
Color Grade FANCY VIVID BLUE
Clarity Grade VVS 1
Depth 60.4%
Table 59%
Girdle Slightly Thick To Thick (Faceted)
Culet Pointed
Polish EXCELLENT
Symmetry EXCELLENT
Fluorescence NONE
Inscription(s) IGI LG778640478

Comments: This Laboratory Grown Diamond was created by Chemical Vapor Deposition (CVD) growth process.
Indications of post-growth treatment.