



LABORATORY GROWN DIAMOND REPORT

April 9, 2026
 IGI Report Number **LG778639558**
 Description **LABORATORY GROWN DIAMOND**
 Shape and Cutting Style **ROUND BRILLIANT**
 Measurements **6.17 - 6.20 X 3.78 MM**

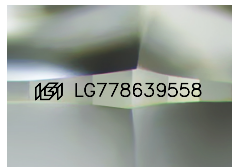
GRADING RESULTS

Carat Weight **0.89 CARAT**
 Color Grade **FANCY YELLOW**
 Clarity Grade **VVS 2**
 Cut Grade **IDEAL**

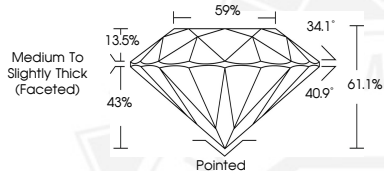
ADDITIONAL GRADING INFORMATION

Polish **EXCELLENT**
 Symmetry **EXCELLENT**
 Fluorescence **VERY SLIGHT**
 Inscription(s) **IGI LG778639558**

Comments: This Laboratory Grown Diamond was created by High Pressure High Temperature (HPHT) growth process. Indications of post-growth treatment.



Sample Image Used



April 9, 2026
 IGI Report Number **LG778639558**
 ROUND BRILLIANT
 LABORATORY GROWN DIAMOND
 6.17 - 6.20 X 3.78 MM
 Carat Weight **0.89 CARAT**
 Color Grade **FANCY YELLOW**
 Clarity Grade **VVS 2**
 Cut Grade **IDEAL**
 Polish **EXCELLENT**
 Symmetry **EXCELLENT**
 Fluorescence **VERY SLIGHT**
 Inscription(s) **IGI LG778639558**

Comments: This Laboratory Grown Diamond was created by High Pressure High Temperature (HPHT) growth process. Indications of post-growth treatment.



April 9, 2026
 IGI Report Number **LG778639558**
 ROUND BRILLIANT
 LABORATORY GROWN DIAMOND
 6.17 - 6.20 X 3.78 MM
 Carat Weight **0.89 CARAT**
 Color Grade **FANCY YELLOW**
 Clarity Grade **VVS 2**
 Cut Grade **IDEAL**
 Polish **EXCELLENT**
 Symmetry **EXCELLENT**
 Fluorescence **VERY SLIGHT**
 Inscription(s) **IGI LG778639558**

Comments: This Laboratory Grown Diamond was created by High Pressure High Temperature (HPHT) growth process. Indications of post-growth treatment.

THIS DOCUMENT WAS PRODUCED WITH THE FOLLOWING SECURITY MEASURES: SPECIAL DOCUMENT PAPER, INK SCREENS, WATERMARK, BACKGROUND DESIGNS, HOLOGRAM AND OTHER SECURITY FEATURES NOT LISTED AND DO EXCEED DOCUMENT SECURITY INDUSTRY GUIDELINES.