



April 9, 2026

IGI Report Number LG778639552
ROUND BRILLIANT
LABORATORY GROWN DIAMOND
5.91 - 5.94 X 3.63 MM

Carat Weight 0.79 CARAT
Color Grade FANCY INTENSE YELLOW

Clarity Grade VVS 2
Cut Grade IDEAL

Polish EXCELLENT
Symmetry EXCELLENT

Fluorescence NONE
Inscription(s) IGI LG778639552

Comments: This Laboratory Grown Diamond was created by High Pressure High Temperature (HPHT) growth process.

LABORATORY GROWN DIAMOND REPORT

April 9, 2026
IGI Report Number **LG778639552**
Description **LABORATORY GROWN DIAMOND**
Shape and Cutting Style **ROUND BRILLIANT**
Measurements **5.91 - 5.94 X 3.63 MM**

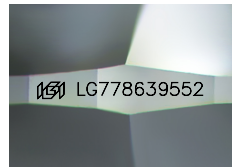
GRADING RESULTS

Carat Weight 0.79 CARAT
Color Grade FANCY INTENSE YELLOW
Clarity Grade VVS 2
Cut Grade IDEAL

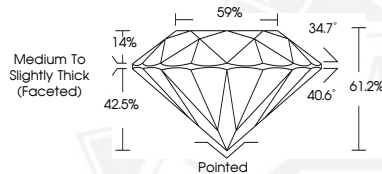
ADDITIONAL GRADING INFORMATION

Polish EXCELLENT
Symmetry EXCELLENT
Fluorescence NONE
Inscription(s) IGI LG778639552

Comments: This Laboratory Grown Diamond was created by High Pressure High Temperature (HPHT) growth process.



Sample Image Used



April 9, 2026

IGI Report Number LG778639552
ROUND BRILLIANT
LABORATORY GROWN DIAMOND
5.91 - 5.94 X 3.63 MM

Carat Weight 0.79 CARAT
Color Grade FANCY INTENSE YELLOW

Clarity Grade VVS 2
Cut Grade IDEAL

Polish EXCELLENT
Symmetry EXCELLENT

Fluorescence NONE
Inscription(s) IGI LG778639552

Comments: This Laboratory Grown Diamond was created by High Pressure High Temperature (HPHT) growth process.



THIS DOCUMENT WAS PRODUCED WITH THE FOLLOWING SECURITY MEASURES: SPECIAL DOCUMENT PAPER, INK SCREENS, WATERMARK, BACKGROUND DESIGNS, HOLOGRAM AND OTHER SECURITY FEATURES NOT LISTED AND DO EXCEED DOCUMENT SECURITY INDUSTRY GUIDELINES.