



ELECTRONIC COPY

LG778638804
Report verification at igi.org



March 10, 2026

IGI Report Number **LG778638804**

Description **LABORATORY GROWN DIAMOND**

Shape and Cutting Style **OVAL BRILLIANT**

Measurements **10.32 X 7.20 X 4.37 MM**

GRADING RESULTS

Carat Weight **2.04 CARATS**

Color Grade **FANCY VIVID BLUE**

Clarity Grade **VVS 2**

March 10, 2026
IGI Report Number **LG778638804**
Description **LABORATORY GROWN DIAMOND**
Shape and Cutting Style **OVAL BRILLIANT**
Measurements **10.32 X 7.20 X 4.37 MM**

GRADING RESULTS

Carat Weight **2.04 CARATS**

Color Grade **FANCY VIVID BLUE**

Clarity Grade **VVS 2**

ADDITIONAL GRADING INFORMATION

Polish **EXCELLENT**

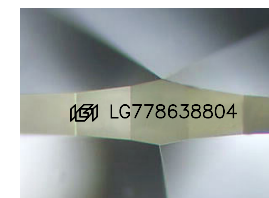
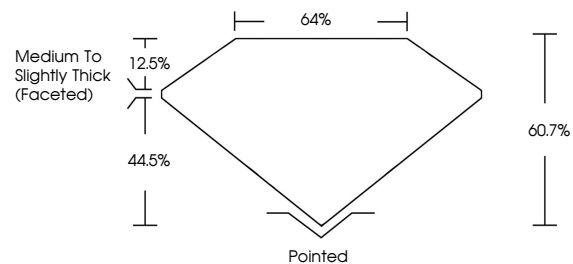
Symmetry **EXCELLENT**

Fluorescence **NONE**

Inscription(s) **IGI LG778638804**

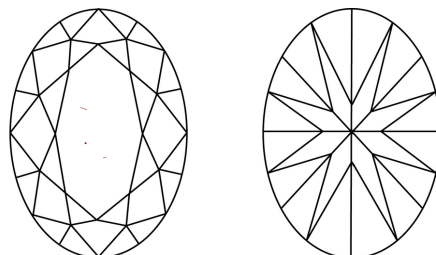
Comments: This Laboratory Grown Diamond was created by Chemical Vapor Deposition (CVD) growth process.
Indications of post-growth treatment.

PROPORTIONS



Sample Image Used

CLARITY CHARACTERISTICS



KEY TO SYMBOLS

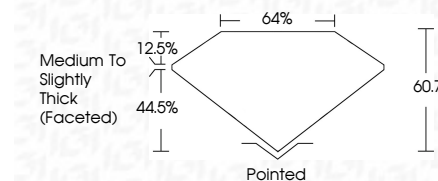
Red symbols indicate internal characteristics.
Green symbols indicate external characteristics.

COLOR

D E F G H I J Faint Very Light Light

CLARITY

FL	IF	VVS ¹⁻²	VS ¹⁻²	SI ¹⁻²	I ¹⁻³
Flawless	Internally Flawless	Very Very Slightly Included	Very Slightly Included	Slightly Included	Included



ADDITIONAL GRADING INFORMATION

Polish **EXCELLENT**

Symmetry **EXCELLENT**

Fluorescence **NONE**

Inscription(s) **IGI LG778638804**

Comments: This Laboratory Grown Diamond was created by Chemical Vapor Deposition (CVD) growth process.
Indications of post-growth treatment.



IGI



March 10, 2026
IGI Report No LG778638804
OVAL BRILLIANT

2.04 CARATS
Carat Weight
FANCY VIVID BLUE
Color Grade
VVS 2
Clarity Grade
60.7%
44.5%
Depth
Table
Girdle
Medium to Slightly Thick (Faceted)

Pointed
EXCELLENT
EXCELLENT
NONE
IGI LG778638804
Inscription(s)

Comments: This Laboratory Grown Diamond was created by Chemical Vapor Deposition (CVD) growth process.
Indications of post-growth treatment.