



ELECTRONIC COPY

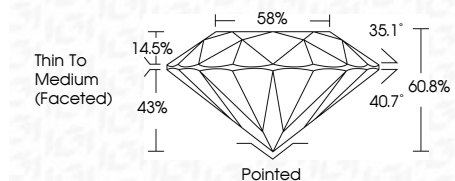
LG778630875
Report verification at igi.org



March 2, 2026
IGI Report Number **LG778630875**
Description **LABORATORY GROWN DIAMOND**
Shape and Cutting Style **ROUND BRILLIANT**
Measurements **6.58 - 6.60 X 4.01 MM**

GRADING RESULTS

Carat Weight **1.07 CARAT**
Color Grade **E**
Clarity Grade **VS 1**
Cut Grade **IDEAL**

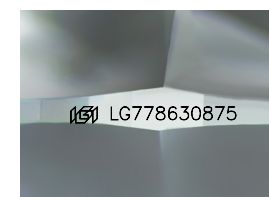


ADDITIONAL GRADING INFORMATION

Polish **EXCELLENT**
Symmetry **EXCELLENT**
Fluorescence **NONE**
Inscription(s) **IGI LG778630875**
Comments: HEARTS & ARROWS
This Laboratory Grown Diamond was created by Chemical Vapor Deposition (CVD) growth process. Type IIa

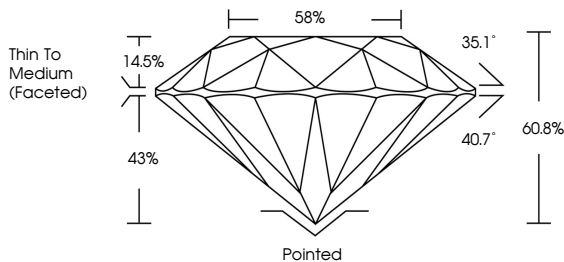


March 2, 2026
IGI Report No **LG778630875**
ROUND BRILLIANT
Carat Weight **1.07 CARAT**
Color Grade **E**
Clarity Grade **VS 1**
Depth **60.8%**
Table **58%**
Girdle **Thin To Medium (Faceted)**
Culet **Pointed**
Polish **EXCELLENT**
Symmetry **EXCELLENT**
Fluorescence **NONE**
Inscriptions(s) **IGI LG778630875**
Comments: HEARTS & ARROWS
This Laboratory Grown Diamond was created by Chemical Vapor Deposition (CVD) growth process. Type IIa

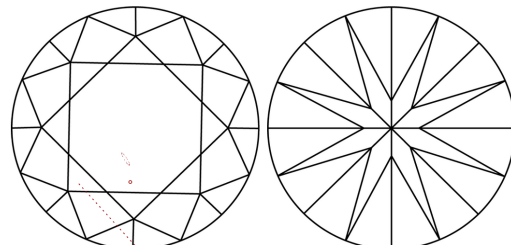


Sample Image Used

PROPORTIONS



CLARITY CHARACTERISTICS



KEY TO SYMBOLS

Red symbols indicate internal characteristics.
Green symbols indicate external characteristics.



COLOR

D	E	F	G	H	I	J	Faint	Very Light	Light
---	---	---	---	---	---	---	-------	------------	-------

CLARITY

FL	IF	VS ¹⁻²	VS ¹⁻²	SI ¹⁻²	I ¹⁻³
Flawless	Internally Flawless	Very Very Slightly Included	Very Slightly Included	Slightly Included	Included

